

# Automated slide preparation

## Take tradition to the next level



 **Tissue-Tek® Prisma®/Glas™ g2**

Automated Slide Stainer and Coverslipper

# The premier glass coverslipper linked into a flexible platform

## Versatility and quality on demand

Every day, histotechnologists are challenged to complete slide preparation in record time with assured accuracy and consistency. Now, the Tissue-Tek® Prisma® Automated Slide Stainer and the Tissue-Tek® Glas™ g2 Automated Coverslipper help meet the constant demand for greater speed and traditional glass... with the convenience and flexibility essential to the practice of histology.

The Tissue-Tek® Prisma®/Glas™ g2 has been designed to deliver a new approach to staining and coverslipping, uniting what were once two separate instruments into one complete system. Featuring mechanically advanced robotic automation, this innovative platform offers a combination of continuous loading, versatility, and high-throughput staining and coverslipping in one system. Users can perform H&E staining and coverslipping of up to 1,900 slides per shift. This efficiency is supported by a range of capabilities, such as programming simultaneous runs of H&E and special stain protocols. After staining, each slide receives a precisely applied glass coverslip that protects specimens and offers clear visibility for slide review. With the Tissue-Tek® Prisma®/Glas™ g2, you can now have an automated walkaway workstation with traditional glass coverslips.

## Tissue-Tek® Prisma® Automated Slide Stainer and Tissue-Tek® Glas™ g2 Automated Coverslipper

- Integrated system delivers continuous staining and coverslipping for walkaway efficiency
- Automatic link system eliminates the need for manual transfer of slides from stainer to coverslipper
- Reagent reservoir configurations allow concurrent runs: H&E and special stains, PAP, and non-gyn
- Both instruments offer load-and-go start options
- Instruments can be operated independently

## Accommodating a variety of staining protocols

The Tissue-Tek® Prisma® Automated Slide Stainer and Tissue-Tek® Glas™ g2 Automated Coverslipper elevate traditional methods with significantly improved efficiency and help make talented histotechnologists and cytologists even more productive.

Regardless of the protocol used, the Tissue-Tek® Prisma®/Glas™ g2 offers reproducible, uniform staining, avoiding the slide-to-slide variability often seen with less advanced staining methods. Users can perform multiple stain runs concurrently—running H&E *and* special stains, or PAP *and* non-gyn. And because the Tissue-Tek® Prisma®/Glas™ g2 is designed for continuous loading, you'll receive slides faster than ever.

Unmatched quality... increased efficiency... total convenience. Experience all these benefits and achieve streamlined workflow with maximum laboratory productivity.

 **Tissue-Tek® Prisma®/Glas™ g2**  
Automated Slide Stainer and Coverslipper





# Integrated staining and glass coverslipping with Tissue-Tek® quality results

Coverslipped slides are easily accessed from the unloading station that accommodates up to 12 slide baskets

Programmable drying time and mounting medium volume

Up to 9 programs accommodate 8 different sizes of glass coverslips

Three-tiered ergonomic cover provides quick access to the entire staining platform and soft closure for greater safety

Removable flash card memory permits long-term storage of all user-defined data

Color touch-sensitive menu screens provide instant visual tracking of staining runs

Intuitive software enables rapid, easy scheduling of staining runs, eliminating workflow bottlenecks

Robotic technology moves slide baskets efficiently from station to station

High-capacity drying stations eliminate the need for offline slide drying in countertop ovens

The Tissue-Tek® Glas™ g2 removes fumes with an advanced filtration system, providing a safer, more comfortable work environment

Holding area keeps slides immersed in solvent while enabling robotic transfer of slides from stainer to coverslipper

The Tissue-Tek® Prisma® supports up to 5 unloading stations

Standard and expanded reservoirs allow scheduling of simultaneous runs of H&E and special stains, or PAPs and non-gyns

Continually load up to 60 slides per run; use up to 3 loading stations

# Walkaway staining and cover slipping — as easy as 1-2-3!

Sakura's load-and-go design makes the Tissue-Tek® Prisma® Automated Slide Stainer and Tissue-Tek® Glas™ g2 Automated Coverslipper the most advanced technology available to make staining and coverslipping as effortless and efficient as possible. This design ensures that the Tissue-Tek® Prisma® is ready for operation at all times.

The Tissue-Tek® Prisma® allows users to define up to 3 stations for loading to maximize slide input. What's more, the Tissue-Tek® Prisma® offers staining for routine H&E techniques and, as an option, is also capable of running a variety of special stain protocols *simultaneously*.

The Tissue-Tek® Prisma® enhances this ability with superior speed. Up to 60 slides at a time can be loaded continuously to provide an uninterrupted flow of slides... meeting the demands of even your busiest days. Sophisticated robotics spares no time in transferring slides between stations; smart software can schedule runs efficiently to ensure nonstop, rapid staining of all runs.

Automatic coverslipping in the Tissue-Tek® Glas™ g2 transforms this system into a true multitasking performer. Mounting medium is automatically and precisely applied to ensure a secure bond with traditional glass coverslips. After coverslipping, slides are held in an unloading station with a full capacity of 240 slides. Retrieving slides is simple: users can remove racks in any order. Sensors identify all empty and full positions, automatically moving racks to the next open space for true walkaway operation.

## 1 Convenient trays facilitate easy loading of stains



*Fast, no-spill  
reagent replacement*

## 2 Rapid loading in the Tissue-Tek® Prisma®



*Stain up to  
500 slides an hour*

## 3 Convenient unloading of coverslipped slides



*Coverslip in crystal clear glass  
up to 400 slides an hour*

The Tissue-Tek® Prisma® and the Tissue-Tek® Glas™ g2 ensure efficient slide transfer between the two instruments. Labs can achieve excellent labor savings and productivity when these two instruments are linked to create one integrated workstation. Minimal hands-on operation is necessary—slides are automatically moved to the coverslipper through precision robotic engineering.

The Tissue-Tek® Prisma®/Glas™ g2 offers reliability you can count on... now, walkaway staining and traditional glass coverslipping are as easy as 1-2-3!

 **Tissue-Tek® Prisma®/Glas™ g2**  
Automated Slide Stainer and Coverslipper



# Choice of configuration gives you total versatility



The Tissue-Tek® Prisma® offers flexible configurations of reservoirs to accommodate protocols, from H&E and special stains to PAP and non-gyn methods.

## Automate standard and special stain methods

The Tissue-Tek® Prisma® Automated Slide Stainer offers the unique ability to process H&E stains and special stains, as an option, at the same time. By allowing concurrent runs of routine and special stain techniques, this instrument enables histology labs to easily automate a wide range of stain processes for consistent results with uncompromised quality.

Users can position special stain reservoirs with H&E stain reservoirs for continuous slide runs of different stain techniques without any delays. Reagent use is optimized through the availability of various slide capacity reservoirs. And convenient transfer trays make reagent replacement and disposal a cinch.

Whether it's flexibility or speed you desire, the Tissue-Tek® Prisma® will meet your expectations with both benefits...and much more.

Tissue-Tek® Prisma® reservoirs are contained in portable trays for easy refilling and cleaning.

## Flex your staining power

- Programming option to differentiate between cytology and histology slides
- Standard and expanded reservoirs ensure compatibility with each lab's changing daily workflow
  - Up to 60 slides continuously loaded, large reservoirs
  - Up to 20 slides continuously loaded, small reservoirs
  - Up to 10 slides continuously loaded, special stain reservoirs
- Adjustable configurations allow concurrent runs of different protocols
  - H&E + special stains
  - PAP + non-gyn
  - H&E + PAP/non-gyn
- Reservoirs may be configured to adapt to changing slide volumes
- 2 drying stations for optimized throughput; 2 optional heating stations for special stain methods



Tissue-Tek® Prisma® software efficiently schedules robotic arm movement of all current runs.

## Standardization in every run

- Tissue-Tek® Prisma® wash stations are replenished after basket removal to maintain staining integrity
- Automated reagent management system alerts operator when reagent rotation is required
- Software provides precise staining control through programmable features
  - Exact timing for critical staining steps
  - Staining mix speed and slide agitation
  - Enhanced wash for thorough rinsing
- Real-time process updates, including predicted end times for all runs



Tissue-Tek® Prisma® menu screens provide quick reference for staining runs in progress.

 **Tissue-Tek® Prisma®/Glas™ g2**  
Automated Slide Stainer and Coverslipper



# The solution is at your fingertips

## Make the connection to new productivity

The Tissue-Tek® Prisma® Automated Slide Stainer and Tissue-Tek® Glas™ g2 Automated Coverslipper system stands apart thanks to its ability to handle two distinctly different duties through one linked system. User-friendly software in each instrument streamlines workflow because operators can fully control system components. Robotics in both platforms offers the latest advances in motion technology, ensuring that slide runs are optimized for high throughput plus a fast, smooth transition from stainer to coverslipper... all without any delay between functions.



Tissue-Tek® Prisma® software facilitates the instrument's robotic link compatibility with the Tissue-Tek® Glas™ g2.

## Cover your slides with efficiency

- Unloading station holds up to 240 slides for true walkaway efficiency
- Coverslipping capacity of up to 400 slides per hour with consistent clarity and quality when operating independently
- Stained slides can be loaded independently of robotic link between the Tissue-Tek® Prisma® and the Tissue-Tek® Glas™ g2
- Four different coverslip lengths available for a variety of applications
  - 45 mm      –55 mm
  - 50 mm      –60 mm
- Fully integrated fume control system

## The result is crystal clear

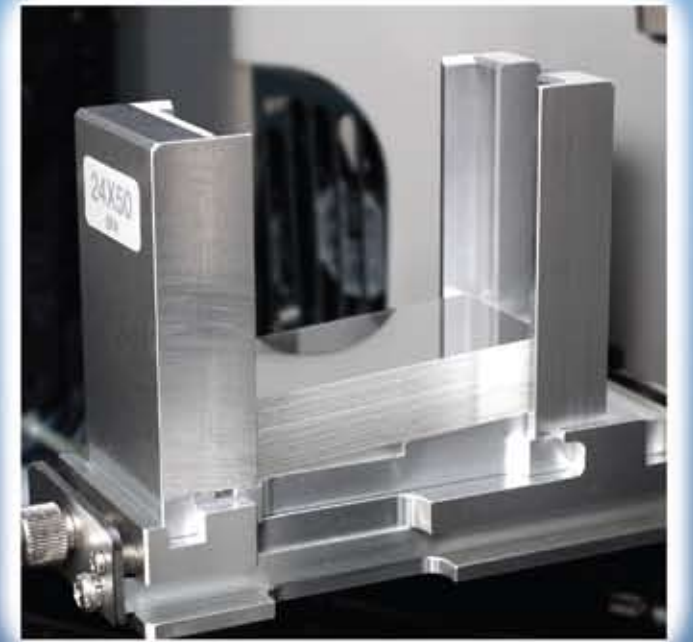
The Tissue-Tek® Glas™ g2 Automated Coverslipper mimics traditional hand coverslipping through a unique process. Beginning at one end of each slide, the Tissue-Tek® Glas™ g2 precisely dispenses mounting medium, coating the slide as it applies coverslipping glass to ensure optimal bubble-free coverage.

Cleverly designed features in this system alert the operator when medium or coverslip levels are low. Plus, built-in safeguards ensure that all runs currently in progress are completed before mounting medium or glass coverslip supplies are depleted.

The Tissue-Tek® Glas™ g2 Automated Coverslipper represents the next level of reliability and maintenance-free operation—featuring the latest technology to minimize coverslipping issues.

The Tissue-Tek® Glas™ g2 is the final word on performance, delivering up to 400 slides per hour—reliably. Its smart, simple design makes it easy to operate. Load up to 60 slides at one time and walk away. In just minutes you'll have crystal clear, bubble-free coverslipped slides ready for review.

Whether this system is operated with the Tissue-Tek® Prisma® or on its own, the Tissue-Tek® Glas™ g2 provides full coverslipping convenience with confidence.



The Tissue-Tek® Glas™ g2 combines traditional glass coverslipping with the convenience of automation.



 **Tissue-Tek® Prisma®/Glas™ g2**  
Automated Slide Stainer and Coverslipper

# Take tradition to the next level



**Tissue-Tek® Glas™ g2  
Automated Coverslipper—#6500  
Tissue-Tek® Glas™ g2 Link System—#6168**



**Tissue-Tek® Prisma® Automated Slide Stainer—#6130  
Tissue-Tek® Prisma® With Special Stains—#6131**



**Standard Solution Reservoir,  
680 mL—#6147**



**Small Solution Reservoir,  
260 mL—#6145**



**Special Stain Reservoir,  
160 mL—#6140**



**Mounting Medium,  
16 oz—#6419**



**20-slide Basket—#4768  
20-slide Basket Adapter—#6136**



**10-slide Basket—#6317  
10-slide Basket Adapter—#6138**



**Receiving Basket—#6504**



**Trusted Innovation™**

**Sakura Finetek USA, Inc.**  
1750 West 214th Street  
Torrance, CA 90501 USA  
Phone: (800) 725-8723

[www.sakuraus.com](http://www.sakuraus.com)