



Workstation components for supply units

Workstation components

Attractively designed, this flexible system provides ergonomic workstation components for workplaces in emergency units, operating rooms, intensive care units and in other medical areas. They allow user-friendly positioning of medical devices. This innovative system is able to be combined in a variety of solutions and offers proper settings for numerous applications.

TABLE OF CONTENTS

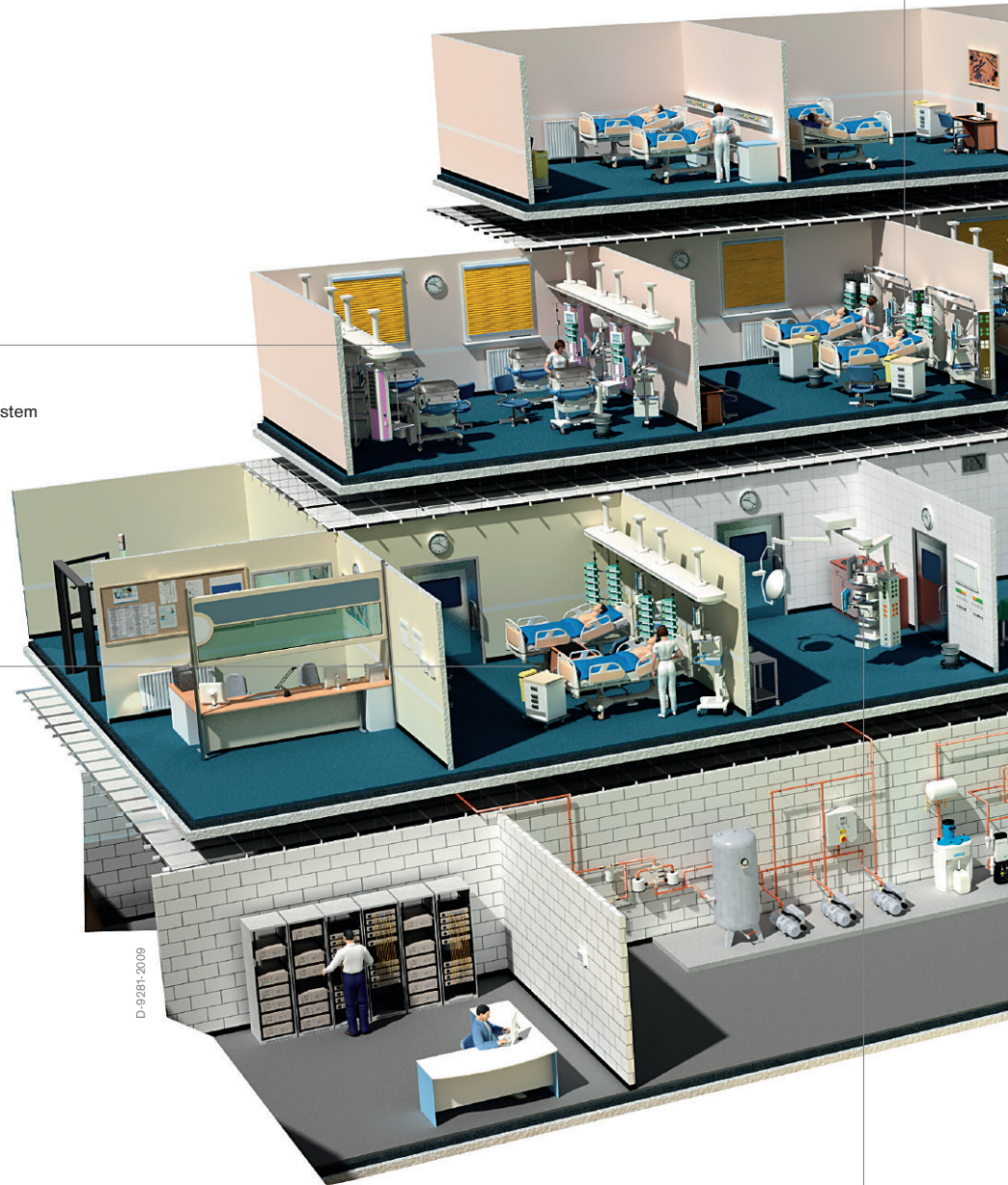
ONE SYSTEM FOR ALL WORKSTATIONS	Overview	04
	Sample of workstation designs	06
	ICU intensive care unit	06
	NICU newborn intensive care unit	07
	Intelligent solutions	08
	Aspiration	08
	Transport infusion system	09
	Operating system	10
	Cable management	11
	Mova® Cart	12
	MediaDocking	13
	Monitoring	14
THE WORKSTATION COMPONENTS SYSTEM	Overview	16
	Configurable components	18
	Shelving system	20
	Connection elements	20
	Sizes	20
	Rails	21
	Drawers	22
	Cable management	23
	Operating elements	24
	Mounting arm system	28
	with VESA interface	29
	with slide interface	30
	for 25 mm tubes	31
	Individual components	32
	Special shelves	33
	Small shelves	34
	Rack & pole	35
	Infusion management	37
	Swivel cabinets	41
	Rails and holders	42
	Cable management	46
	Operating elements	47
	MediaDocking	48
	Equipment holders	49
	Ceiling- and wall mount sets	50
	Additional accessories	51

Complete solutions – One system for all workstations

Intermediate Care
e.g. with GeminaDUO
wall supply unit

Neonatal care area
e.g. with Ponta beam system

Recovery room
e.g. with Ponta beam system

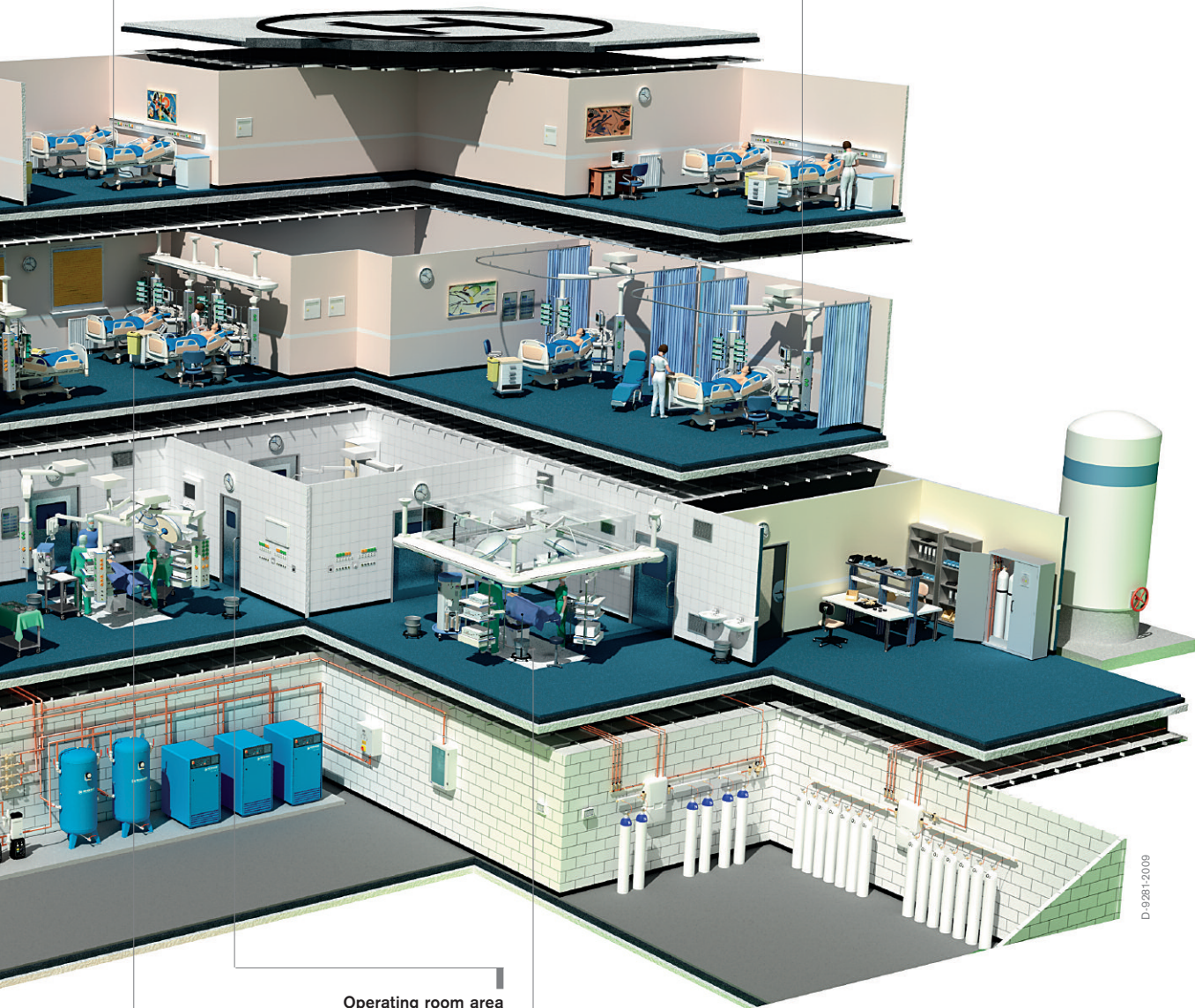


D-9251-2009

Emergency care
e.g. with Agila ceiling
supply unit

Normal care area
e.g. with Linea wall supply unit

Intensive care area
e.g. with Movita ceiling supply unit



Operating room area
e.g. with ceiling supply unit
Agila/Movita

Operating room area
e.g. with OPERA beam system

Intensive care area
e.g. with Agila/Movita ceiling
supply unit

D-9281-2009

ICU INTENSIVE CARE UNIT



D-26365-2009



D-27705-2009



D-26871-2009

Customer-oriented workstations – design and function in perfect harmony

- Consistent design concept in all areas of the hospital
- Modular system for flexible and ergonomic workstation design
- Extensive portfolio for improving the processes of daily routines
- Intelligent detailed solutions support a tidy workplace
- Experienced staff offers careful consultation to provide the optimal solution

We offer you a flexible workstation design in the ICU, where ergonomics, efficiency, and safety are the key concerns.

Good design not only has a positive effect on the quality of care; it also enables optimal utilization of space. A ceiling supply unit (CSU) and individual components allow you to move freely, according to your needs.

The floor is kept free, which simplifies cleaning and the hygiene aspects are also considered. The integrated cable management system reduces tripping hazards and provides a clearer overview. The dry and wet areas are

clearly separated from each other. A workstation designed in this manner also provides staff unhindered access to patients to support efficient workflow.

NICU NEWBORN INTENSIVE CARE UNIT



Intelligent solutions

- Easy to install products
- Optimal design for flexible workstations, diverse positioning options for individual components
- Integrated solutions improve cleaning, help reduce the risk of error, and foster a harmonious workplace
- High-quality materials and a well thought-out design contributes to efficient and effective cleaning
- Proven technology and robust design for long operating life



The smallest patients often make high demand on the design of intensive care units: optimal flexibility for neonatal intensive care units

Consistent design also helps provide optimal care. Flexible supply columns enable medical devices to be placed where they are needed at any time. Without leaving the baby, you can operate the equipment from your position. This flexible workstation design

allows you to keep an eye on the baby, while having access from all sides. This enables you to care for your patient as best as possible and creates an environment in which parents also feel comfortable.

INTELLIGENT SOLUTIONS | ASPIRATION



D-26669-2009



D-26665-2009



D-26664-2009

Organized process support represents an important contribution to time and cost savings in the medical field. Take advantage of our global experience and optimize your workflow to benefit your patients.

OPTIMIZED ASPIRATION

- Ergonomic positioning, everything always within reach
- Standardized set-up, coordinated workflow
- Clear separation, improved hygiene
- Safe installation, no tripping hazard

ASPIRATION SYSTEM SET-UP

Secretion bottles are mounted onto a standard rail, which is attached to a mounting arm below the shelf. During aspiration or when the bottles need to be emptied, secretion bottles can be pulled forward to the patient's bed using the swivel arm. When not in use, the swivel arm is simply folded beneath the work surface. This creates valuable space and produces a hygienic separation from the patient.

ORDER INFORMATION**Parts required**

Support arm for front rail or support arm for 38 mm tube	G 96 526
Rail holder, short	G 13 822
Individual standard rail, 600 mm	G 13 829
Small equipment pole, 500 mm	G 15 676
Clamp ring set	G 19 015
Bronchial aspiration system VarioVac B/OP rail	MP 00 505
Vacuum tube corresponding with national standards	86 01 697
Shut-off ejector with pressure gauge	2M 85 040
Medical compressed air hose corresponding with national standards	86 01 697
Secretion bottle package	M 85 056
Ceiling mount	M 85 119
Aspiration hose holder	M 85 239
Rail holder	M 26 842

Additional options

Connecting-hose holder	2M 85 446
Wire basket for disposable gloves, 150 mm	M 26 146
Wire basket for catheter storage, 600 mm	M 25 121

INTELLIGENT SOLUTIONS | TRANSPORT INFUSION SYSTEM



ORDER INFORMATION

Transport infusion system	
Transport infusion accommodation	G 93 861
Transport infusion holder	G 93 862

TECHNICAL DATA

Transport infusion system	
Maximum capacity	15 kg
Standard diameter for infusion poles	25 mm

System for automatic or manual transfer of an infusion system to height-adjustable ICU beds, lifting arms or height-adjustable ceiling supply units.

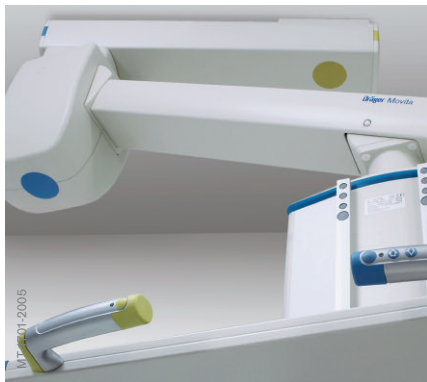
The system provides optimal support for transporting patients within the hospital.

OPTIMAL SUPPORT DURING PATIENT TRANSPORT

- Compact, flexible
- Various lifting options simplify transfer of the system

- Easy transfer to ICU beds using the respective 25 mm adapters on the bed corners
- Less staff required for patient and system transport
- Reduced risk of disconnecting the infusion lines

INTELLIGENT SOLUTIONS | OPERATING SYSTEM



The interpretation of functional symbols can be problematic for users. The operating concept of your Dräger ceiling supply units with braking and/or height-adjustment functions recognizes this.

It supports the user's cognitive motor skills. Contrasting color codes on grips, keypads, and swivel arm mounts enable quick, intuitive, and visual assignment of control functions for pneumatic brakes and height-adjustment. Color concepts such as these have already become established in other industries.

COLOR-CODED OPERATING CONCEPT

- Information at a glance provides intuitive, efficient operation
- Contrasting colors replace symbols to ensure correct operation
- A consistent operating concept for all Dräger ceiling supply units

ORDER INFORMATION

Shelf operating element attachments	
as handles, without additional functionality	G 92 990
with controls for a pneumatic brake	G 92 991
with controls for a pneumatic brake and height-adjustment	G 92 992
with controls for two pneumatic brakes	G 92 993
with controls for two pneumatic brakes and height-adjustment	G 92 994
with controls for height-adjustment	G 92 995
Column/head operating element attachments	
as handles, without additional functionality	G 93 671
with controls for a pneumatic brake	G 93 672
with controls for a pneumatic brake and height-adjustment	G 93 673
with controls for two pneumatic brakes	G 93 674
with controls for two pneumatic brakes and height-adjustment	G 93 675
with controls for height-adjustment	G 93 676

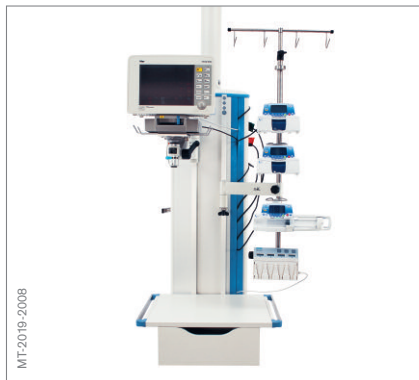
INTELLIGENT SOLUTIONS | CABLE MANAGEMENT



D-26583-2009



D-26305-2009



MT-2019-2008

The integrated Dräger Movita cable management system and the cable boxes for the shelves assist in arranging your workstations more ergonomically, with improved overview.

WORKSTATION OPTIMIZATION

- Reduction of cleaning and disinfection times by feeding cables and hoses through a closed cable duct
- Improved workstation organization by eliminating seldom-used cables from the work area
- Risk reduction of connection errors
- Simplified workstation design via separation into frequently and less

- frequently exchanged hoses and cables
- Optimized workflow through well structured workstation set-up
- Reduction of contamination risk

To achieve maximum cable management capacity, a cable duct can be installed on each side of the Movita column.

ORDER INFORMATION

Dräger Movita® cable management

Movita cable management can accommodate up to four 14 mm gas hoses and ten 7 mm electrical cables. Movita cable management is available in the following column lengths:

Cable duct lengths

500 mm	G 98 080
750 mm	G 98 081
1,000 mm	G 98 082
1,250 mm	G 98 083
1,500 mm	G 98 084

Cable boxes

Dimensions (H x D x W)

110 x 140 x 109 mm	G 93 341
110 x 140 x 215 mm	G 93 340
110 x 140 x 315 mm	G 93 534
170 x 140 x 109 mm	G 93 535
170 x 140 x 215 mm	G 93 536
170 x 140 x 315 mm	G 93 537

INTELLIGENT SOLUTIONS | MOVA® CART



D-9863-2009



MT-1672-2005



D-27774-2009

The mobility provided by the Mova Cart supports you optimally while using your equipment – whether in the operating room or in the intensive care unit.

MOVA CART LIFT FOR ENDOSCOPIC PROCEDURES

With the help of the slide handles, you can dock the trolley to the CSU. The tapered mounting pins simplify correct positioning with the docking system.

A magnetic, mechanical safety system ensures that the wagon does not detach unexpectedly. After docking with the CSU, the height of the Mova Cart Lift can be adjusted individually.

MOVA CART IN THE INTENSIVE CARE

This Mova Cart features a docking system that enables it to be connected to the ceiling supply unit easily. The wagon can now be swivelled on the floor together with the CSU. The Mova Cart/CSU system allows for easy positioning of the ventilation device.

ORDER INFORMATION

Mova® Cart Lift - wide	G 15 970
Max. load	100 kg

External dimensions (H x W x D)	
1,421 x 780 x 560 mm	

Mova® Cart Lift - narrow	G 15 971
Max. load	100 kg

External dimensions (H x W x D)	
1,421 x 630 x 560 mm	

Mova® Cart Lift (Evita)	G 15 972
Max. load	50 kg

External dimensions (H x W x D)	
950 x 630 x 560 mm	

Mova® Cart (Evita)	G 15 973
Max. load	40 kg

External dimensions (H x W x D)	
850 x 630 x 560 mm	

INTELLIGENT SOLUTIONS | MEDIADOCKING



In times when hospital budgets are lean, new operating room concepts are required to be able to efficiently treat the growing number of patients. A high degree of flexibility in the operating room configuration is hereby essential.

The practical MediaDocking option reduces operating room preparation times, above all in multi-functional operating rooms. MediaDocking is a mechanical docking system for gases and power supply as well as video and data cabling, which is automatically connected to the ceiling supply unit. This eliminates time-consuming connecting of hoses and cables between the individual operation procedures.

MEDIADOCKING OFFERS NUMEROUS ADVANTAGES

- Quick switching of equipment configurations increases operating room throughput
- Helps to improve safety due to clear, unmistakable media interfaces
- Clear workstation design helps to increase hygiene by avoiding cables and hoses
- Mechanically compatible with existing Dräger devices for ceiling connection

TECHNICAL DATA

Mova® Cart Lift with MediaDocking **G 91 370**

	Movita® lift	Forta® lift
Max. Load	180 kg	270 kg

Medical gases

- O₂
- N₂O
- CO₂
- Air 5 bar
- Vacuum
- AGSS

Electrical connections

- Power (circuit 1) 230 V, 50 Hz, max. 16 A
- Power (circuit 2) 230 V, 50 Hz, max. 16 A
- Potential equalization
- Network up to 250 MHz via RJ45
- Dräger Medibus (Sub D 9)
- Switch contact
- Video (S-VHS) via Mini-DIN

Media column

Limited number of conventional connections

INTELLIGENT SOLUTIONS | MONITORING



D-28616-2009



MT-0675-2008



MT-0671-2008

Attractively designed, the flexible Dräger mounting arm system provides ergonomic positioning of devices in emergency units, operating rooms, intensive care units as well as in other care areas.

- The adjustable friction brake prevents unintended movement of the swivel arm, therefore supporting risk minimization of unwanted separation
- The integrated cable management system supports easy cleaning and fosters a tidy workplace.
- The system is easy to install and use.
- It enables ergonomic positioning of displays and other equipment.
- Proven technology and robust design provide a long operating life.
- The system includes horizontal swivel arms as well as spring-loaded lifting arms with numerous standard interfaces.
- Cleaning is easy since surfaces in which dust and grime can collect are reduced to a minimum.

TECHNICAL DATA

Swivel arm for monitoring

Length 200, 300 or 400 mm, or in various combinations up to a max. arm length of 600 mm (double-arm version)

Weight	3.5 - 5.0 kg
depending on arm version	
Max. load	15 kg

Lift arm for monitoring

Length 520 mm plus 200 or 300 mm in combination (double-arm version)

Weight depending on arm version	6.0 - 10.2 kg
Max. load	15 kg
Max. lifting height	500 mm

Swivel arm for infusion pumps

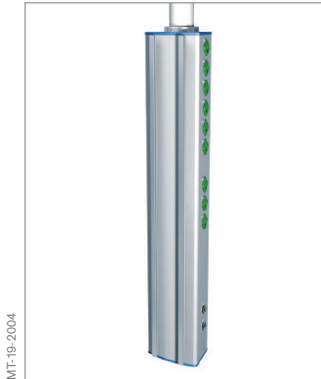
Length 200, 300 or 400 mm, or in various combinations up to a max. arm length of 600 mm (double-arm version)

Weight	4.0 - 6.9 kg
depending on arm version	
Max. load depending on arm version	15 - 40 kg

Exact specifications are provided in the mounting arm system chapter.

One system for all interfaces

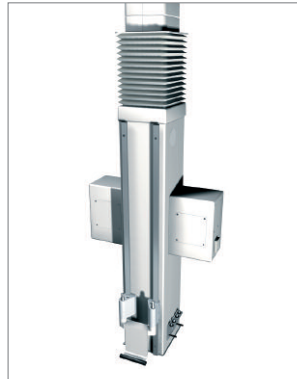
FRONT RAIL



Agila column



Movita column



Forta column

CENTRAL 38 MM TUBE



Agila / Movita head with pole



Agila Column tube



GeminaDUO



Ponta / Opera with pole

38 MM RACK



Agila / Movita head with rack

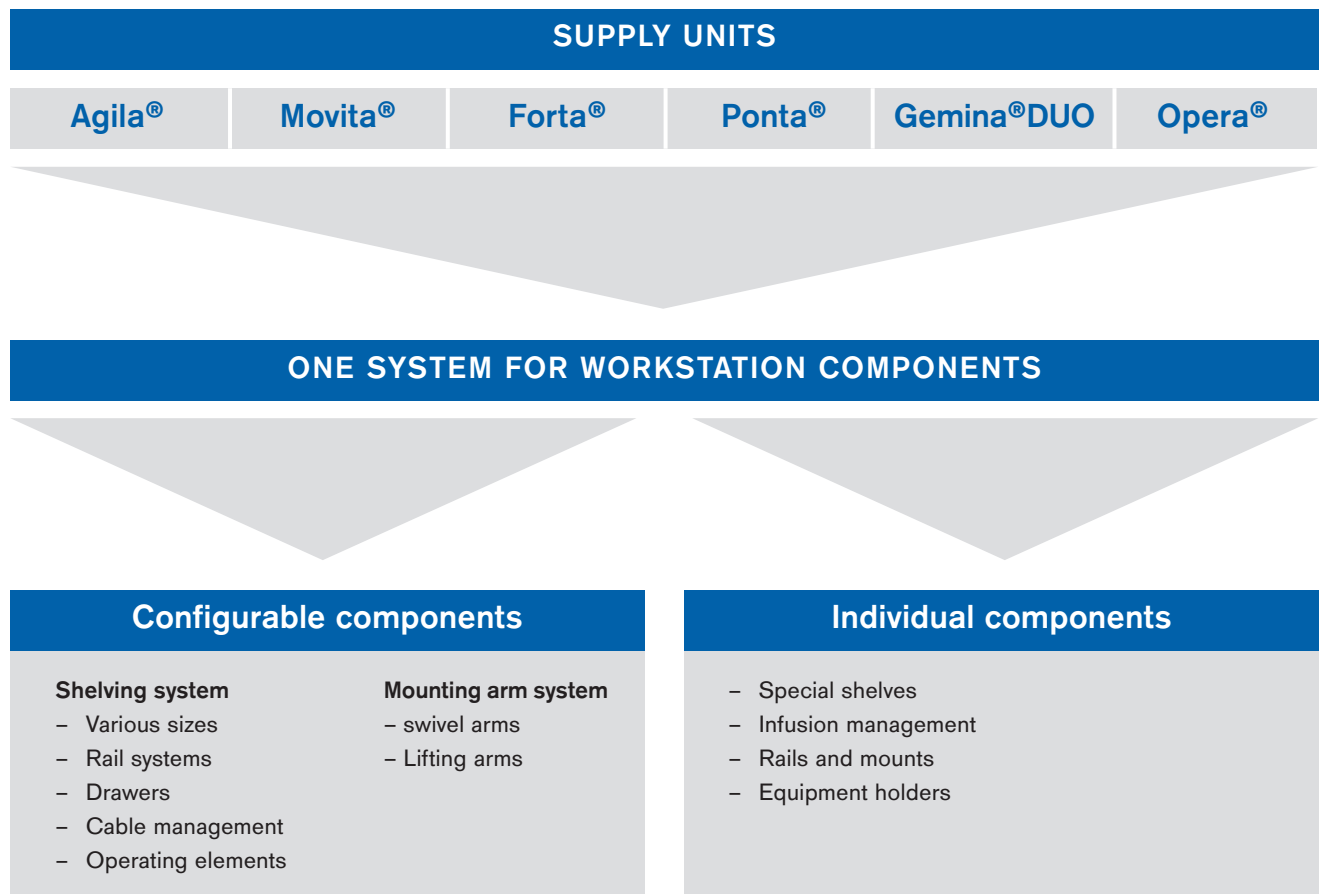


Ponta / Opera with rack

Workstation components

These workstation components can be divided into two groups:

- Configurable solutions that include the shelf and drawer system
- Individual products such as small equipment poles, rails, clamps, holders, equipment holders, etc.



Configurable workstation components I



Shelves and drawers

The shelving and drawer system is a comprehensive building block featuring more than 1,000 solutions. These can be configured according to the customer's needs. This modular system makes it possible to design the workstation optimally and entirely according to personal requirements. The configuration of shelves and drawers using this modular system is based on the 6 selected criteria:

- Selection of the connection element to the supply unit
- Selection of the desired shelf size
- Selection of the rail system
- Selection of a drawer or a documentation module
- Selection of the cable management system
- Selection of operating elements



SHELVES | CONNECTION ELEMENTS

The system offers a solution for our entire portfolio of supply units. This means: One design fitting for all workstations. In the first step, a selection needs to be made regarding the system the configuration is intended for, i.e. Agila, Movita, and Forta, GeminaDUO or Ponta and Opera.



D-27717-2009

Example: Attachment of shelf onto 38 mm tube (rack)

CONNECTION ELEMENTS

FRONT RAIL

This interface is located on the front of the Agila, Movita, and Forta columns.

CENTRAL 38 MM TUBE

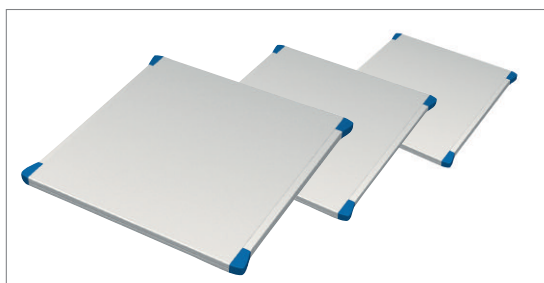
This interface is located on the Agila and Movita heads and on the Ponta and Opera, also on 3 sides of the Agila tube and on the front side of the GeminaDUO.

38 MM TUBE AS RACK

This interface is located on the Agila and Movita heads and on the Ponta and Opera racks

SHELVES | SIZES

The portfolio includes 6 different sizes, each featuring a load capacity of 40 kg. The shelves consist of powder-coated aluminum, which provides a smooth, scratch-resistant, and anti-static surface quality. The corners of the shelves feature silicon attachments to protect against collision for safer use. Each shelf is 22 mm high.



D-27731-2009

Example: Shelf for media column

SHELF SIZES

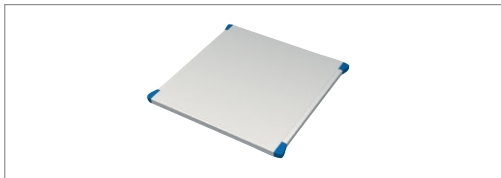
Usable surface (W x D)	Overall dimensions (W x D)
430 x 340 mm	480 x 340 mm
630 x 340 mm	680 x 340 mm
430 x 480 mm	480 x 480 mm
530 x 480 mm	580 x 480 mm
630 x 480 mm	680 x 480 mm
860 x 480 mm	910 x 480 mm

SHELVES | RAILS

All configurable shelves can be equipped with standard rails (10 mm x 25 mm). These can be attached to the sides or to the front edge, and each features a maximum load capacity of 10 kg. The rails for the front edge and for lateral connection to 2 x 38 mm tubes are slightly curved for safer handling. Lateral versions feature a silicon bumper to prevent injury. The configuration is factory-provided. Retrofitting is not possible.



D-26256-2009



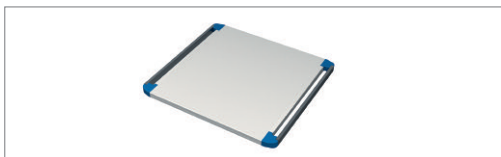
D-27737-2009

Example: Shelf without rail



D-27736-2009

Example: Shelf with front rail



D-27735-2009

Example: Shelf with lateral rails



D-27734-2009

Example: Shelf with front and lateral rails

RAILS

RAIL ON THE FRONT EDGE OF THE SHELF

Rail length	320 mm
Max. load	10 kg

RAILS ON THE SIDES OF THE SHELF

For front rails or rear 38 mm tube

Rail length for shelf depth 480 mm	380 mm
Rail length for shelf depth 340 mm	240 mm

For 2 lateral 38 mm tubes

Rail length for shelf depth 480 mm and 340 mm	320 mm
Max. load	10 kg each

RAIL ON THE FRONT EDGE OF SHELF AND ON THE SIDES OF THE SHELF

Rail length	240-380 mm
Max. load	10 kg

For rail elements, the following dimensions must be added to the width of the shelf's usable surface:

No rails: + 50 mm (2 x 25 mm)

Lateral rails and not rack: + 90 mm (2 x 45 mm)

Lateral rails with rack holders: + 150 mm (2 x 75 mm)

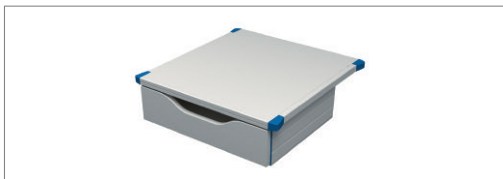
Example: shelf without rails: Width: 430 + 50 = 480 mm

SHELVES | DRAWERS

Drawers and document compartments can optionally be added below the shelves. Drawers can be removed easily, which is ideal for optimal cleaning. The front panel can also be easily replaced. The automatic closing function ensures that drawers and documentation modules close silently. One shelf can accommodate 2 elements each, however the maximum load remains unchanged. A lockable version is also available. For connection to a front rail (e.g. Movita column) or to a rear 38 mm tube (e.g. GeminaDUO), a shelf depth of 480 mm must be planned for in order to configure a drawer or documentation module.



D-27753-2009



D-27733-2009

Example: Shelf with drawer



D-27735-2009

Example: Shelf with 2 drawers



D-27731-2009

Example: Shelf with drawer and lock

DRAWERS

Versions

- 1 drawer
- 1 drawer with lock (incl. 2 keys)
- 2 drawers
- 2 drawers and 1 lock
- 2 drawers and 2 locks
- 2 drawers and 2 locks on a shelf (860 x 480 mm)
- 1 drawer and 1 documentation module
- 1 drawer with lock and 1 documentation module
- 1 documentation module

shelf dimensions (W x D)	Dimensions (W x D x H)		max. Weight	Load
	exterior/interior			
430 x 340 mm*	430 x 340	170 mm	7.2 kg	7.0 kg
430 x 480 mm*	430 x 340	170 mm	7.2 kg	7.0 kg
530 x 480 mm	365 x 243	120 mm	7.4 kg	7.0 kg
630 x 340 mm	630 x 340	170 mm	9.2 kg	7.0 kg
630 x 480 mm	565 x 243	120 mm	9.9 kg	7.0 kg

*in case of the shelf (860 x 480 mm) in combination with 2 additional elements (e.g. drawers), these will be attached side by side below the shelf.

SHELVES | CABLE MANAGEMENT

One set of cable boxes consists of 2 aluminum boxes with plastic covers. These are attached directly below the shelf, or behind the drawer or the documentation module. They are ideally suited to storing cables from medical equipment, since extra cable lengths can be stored in a practical and tidy manner.



D-26600-2009



D-27727-2009

Example: cable box G 93 340

CABLE MANAGEMENT

Suitable for attachment to all shelves (not possible for shelf depths of 340 mm with drawer or documentation module). Configuration is pre-assembled for the shelf indicated.

The cable management system can also be ordered separately and equipped retroactively for already installed shelves.

Depending on the given shelf version, the following versions can be configured:

Cable management system height 110 mm, depth 140 mm

width 109 mm each (2x)	G 93 341
width 215 mm each (2x)	G 93 340
width 315 mm each (2x)	G 93 534

The height of the cable management system corresponds with that of a documentation module.

Cable management system height 170 mm, depth 140 mm

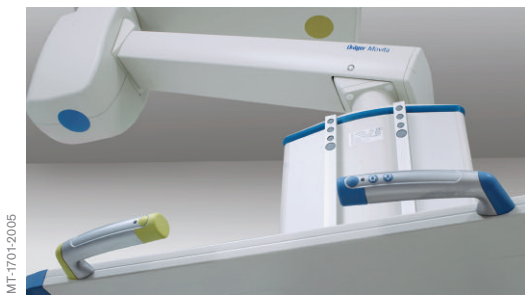
width 109 mm each (2x)	G 93 535
width 215 mm each (2x)	G 93 536
width 315 mm each (2x)	G 93 537

The height of the cable management system corresponds with that of a drawer or documentation module.

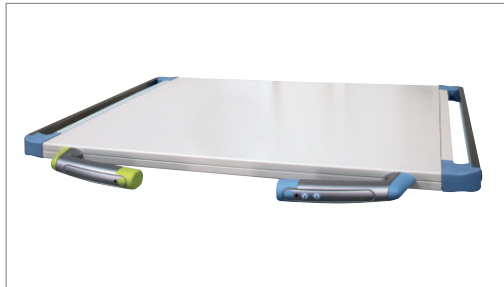
Cable boxes can also be equipped retroactively.

SHELVES | OPERATING ELEMENTS

The operating elements on all shelves can be used in combination with Agila/Movita heads and columns as well as Forta columns and Agila tubes. The set consists of 2 grip elements and helps optimize comfortable operation of the supply unit (SU). The ergonomically designed shape of the handles supports the user while positioning the supply unit. Depending on the arm system and beam system used, all functions (height- adjustment, pneumatic brakes) can be controlled electronically via integrated operating buttons. The color scheme, which corresponds to the other supply unit components (support arm with pneumatic brake, keypad), provides intuitive operation of the system and increases safety of operation.



MT-1701-2005



MT-1702-2005

Example: Shelf with operating element for height-adjustment and pneumatic brakes

OPERATING ELEMENTS

ORDER INFORMATION

Shelf attachments

as handles, without additional functionality	G 92 990
with controls for a pneumatic brake	G 92 991
with controls for a pneumatic brake and height- adjustment	G 92 992
with controls for two pneumatic brakes	G 92 993
with controls for two pneumatic brakes and height-adjustment	G 92 994
with controls for height-adjustment	G 92 995

Column/head attachments

as handles, without additional functionality	G 93 671
with controls for a pneumatic brake	G 93 672
with controls for a pneumatic brake and height- adjustment	G 93 673
with controls for two pneumatic brakes	G 93 674
with controls for two pneumatic brakes and height-adjustment	G 93 675
with controls for height-adjustment	G 93 676

Attention:

Operating elements can only be ordered in connection with a shelf resp. head or column.

Configurable Workstation components II

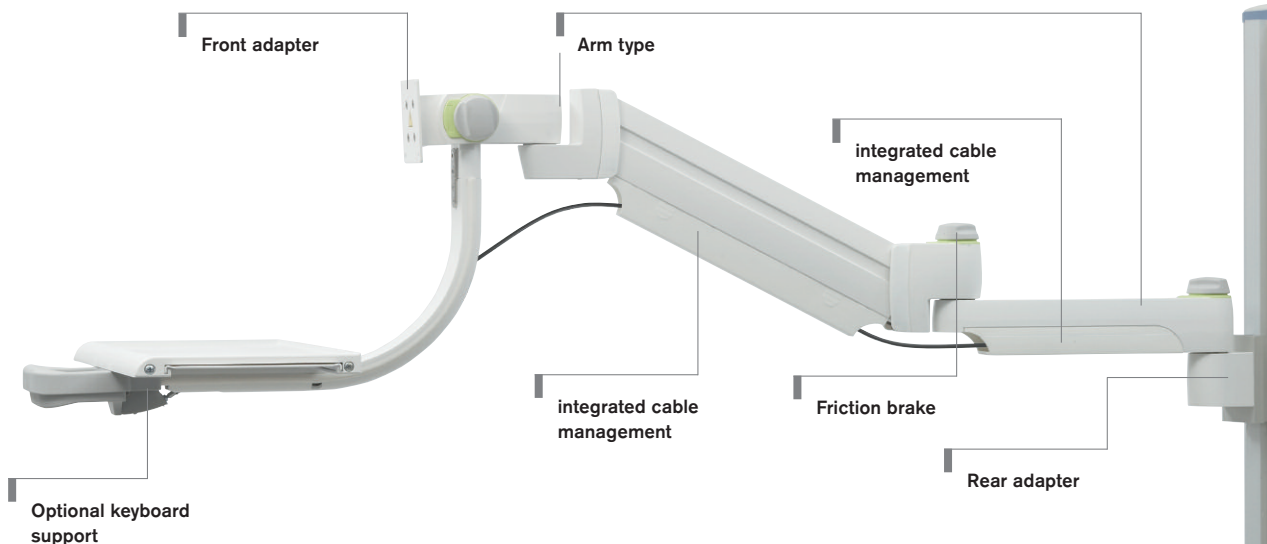


Mounting arm system

The Dräger mounting arm system is ideally suited for supporting displays and can also be used with numerous other medical devices. It is equipped with adjustable friction brakes to prevent unintended movement of the swivel arm. It is easy to install, and the integrated cable management helps to store cables sensibly. This proven technology and robust design also contributes to a long operating life with many benefits in terms of ergonomics and functionality.

THE THREE COMPONENTS

- Front adapter for connection to the device to be positioned (monitor, infusion management system, etc.).
- Rear adapter for connection to the supply unit
- Different arm types



Adapters and arm types of the Mounting arm system

FRONT ADAPTER



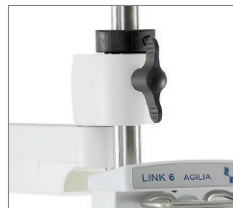
D-26973-2009

VESA
for Monitoring devices such as CX00 and Kappa XLT, standard adapter for various monitors and displays.



D-26969-2009

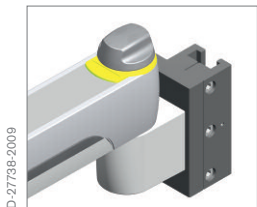
Slide
for Delta and Gamma monitors.



D-26976-2009

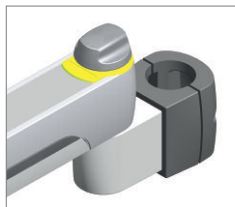
Infusion
Adaptation for infusion pumps and other equipment that can be attached to a 25 mm tube.

REAR ADAPTER



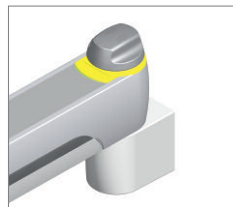
D-27736-2009

Front rail
Adapter for vertical standard rail on Agila, Movita, and Forta column.



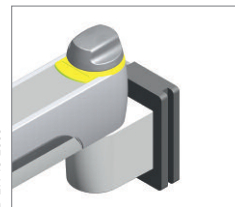
D-27726-2009

Ø 38 mm tube
Adapter for vertical 38 mm tube on Agila/Movita head, Agila tube, Ponta, Opera, and GeminaDUO.



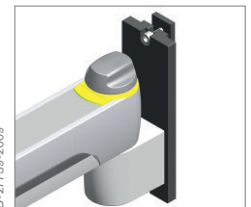
D-27728-2009

Agila EasyLift
Adapter for Agila EasyLift head.



D-27745-2009

Vertical rail
Adapter for GCX rail (wall duct).



D-27739-2009

T-slot
Adapter for Primus IE.

ARM TYPES



D-27714-2009

Swivel arm
with integrated cable management system and friction brake.



D-26976-2009

Double arm
with integrated cable management system and friction brake.



D-27725-2009

Lifting arm
with integrated cable management system, friction brake, and ergonomic grip for operating the height-adjustment.



D-27724-2009

Lifting arm with keyboard support
with integrated cable management system, friction brake, and ergonomic grip for operating the height-adjustment and keyboard support with mouse compartment.



D-27725-2009

Lifting arm
with extension, integrated cable management system, friction brake, and ergonomic grip for operating the height-adjustment.

MOUNTING ARM SYSTEM | VESA VERSIONS



VESA mounting arm on front rail (e.g. Agila Column)

VESA | FRONT END INTERFACE

Rear adapter	Arm type	Arm length	Total length	Weight	Max. load	Order no.
Front rail						
Front rail	Swivel arm	400 mm	600 mm	4.0 kg	15 kg	G 96 520
Front rail	Double arm	300/300 mm	800 mm	4.9 kg	15 kg	G 96 715
Front rail	Lifting arm	520 mm	570 mm	6.0 kg	15 kg	G 96 544
Front rail	Lifting arm with keyboard support	520 mm	570 mm	8.0 kg	15 kg	G 96 719
Front rail	Lifting arm with extension	520/300 mm	870 mm	7.8 kg	15 kg	G 96 548
Front rail	Lifting arm with extension and keyboard support	520/300 mm	870 mm	9.8 kg	15 kg	G 98 116
38 mm tube						
38 mm tube	Double arm	300/300 mm	800 mm	4.9 kg	15 kg	G 96 714
38 mm tube	Lifting arm	520 mm	570 mm	6.0 kg	15 kg	G 96 546
38 mm tube	Lifting arm with keyboard support	0 mm	570 mm	8.0 kg	15 kg	G 96 717
38 mm tube	Lifting arm with extension	520/300 mm	870 mm	7.8 kg	15 kg	G 96 550
Agila® EasyLift®						
Agila EasyLift	Double arm	300/300 mm	800 mm	4.9 kg	15 kg	G 96 713
Agila EasyLift	Swivel arm	300 mm	500 mm	3.7 kg	15 kg	G 96 711
Vertical rail (GCX)						
Vertical rail (GCX)	Swivel arm	200 mm	400 mm	3.5 kg	15 kg	G 96 507
Vertical rail (GCX)	Swivel arm	300 mm	500 mm	3.7 kg	15 kg	G 96 503
Vertical rail (GCX)	Swivel arm	400 mm	600 mm	4.0 kg	15 kg	G 96 508
Vertical rail (GCX)	Double arm	300/300 mm	800 mm	4.9 kg	15 kg	G 96 712
Vertical rail (GCX)	Lifting arm	520 mm	570 mm	6.0 kg	15 kg	G 96 555
Vertical rail (GCX)	Lifting arm with keyboard support	520 mm	570 mm	8.0 kg	15 kg	G 96 558
Vertical rail (GCX)	without arm	0 mm	200 mm	2.5 kg	15 kg	G 96 564
T-slot						
T-slot	Lifting arm with keyboard support	520 mm	570 mm	8.0 kg	15 kg	G 96 718
Accessories						
Adapter from 75 x 75 mm to 100 x 100 mm						G 96 811

MOUNTING ARM SYSTEM | SLIDE VERSIONS



D-26967-2009

Double swivel arm with slide adapter, e.g. for the Delta Display

SLIDE | FRONT END INTERFACE

Rear adapter	Arm type	Arm length	Total length	Weight	Max. load	Order no.
Front rail						
Front rail	Swivel arm	400 mm	600 mm	4.0 kg	15 kg	G 96 518
Front rail	Swivel arm	200 mm	400 mm	3.5 kg	15 kg	G 96 519
Front rail	Lifting arm	520 mm	570 mm	6.0 kg	15 kg	G 96 545
Front rail	Lifting arm with extension	520/300 mm	870 mm	7.8 kg	15 kg	G 96 549
38 mm tube						
38 mm tube	Lifting arm	520 mm	570 mm	6.0 kg	15 kg	G 96 547
38 mm tube	Lifting arm with extension	520/300 mm	870 mm	7.8 kg	15 kg	G 96 551
Vertical rail (GCX)						
Vertical rail (GCX)	Swivel arm	200 mm	400 mm	3.5 kg	15 kg	G 96 505
Vertical rail (GCX)	Swivel arm	300 mm	500 mm	3.7 kg	15 kg	G 96 504
Vertical rail (GCX)	Swivel arm	400 mm	600 mm	4.0 kg	15 kg	G 96 506
Vertical rail (GCX)	Double arm	400/200 mm	800 mm	5.0 kg	15 kg	G 97 912
Vertical rail (GCX)	Lifting arm	520 mm	570 mm	6.0 kg	15 kg	G 96 554
Vertical rail (GCX)	Lifting arm with keyboard support	520 mm	570 mm	8.0 kg	15 kg	G 96 557
T-slot						
T-slot	Swivel arm	300 mm	500 mm	3.7 kg	15 kg	G 96 523
T-slot	Swivel arm	400 mm	600 mm	4.0 kg	15 kg	G 96 525

MOUNTING ARM SYSTEM | INFUSION VERSIONS



Double swivel arm on a 38 mm tube for 25 mm pole (infusion)

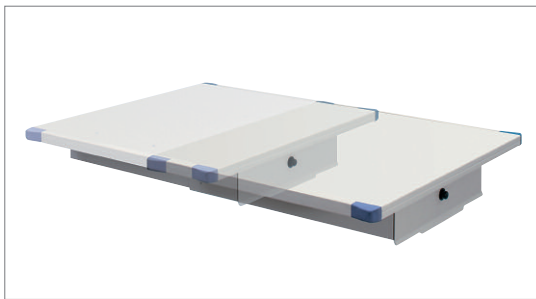
INFUSION I (25 mm TUBE) FRONT END INTERFACE

Rear adapter	Arm type	Arm length	Total length	Weight	Max. load	Order no.
Front rail						
Front rail	Swivel arm	300 mm	500 mm	4.3 kg	40 kg	G 96 526
Front rail	Swivel arm	400 mm	600 mm	4.7 kg	40 kg	G 96 528
Front rail	Double arm	300/200 mm	700 mm	5.8 kg	35 kg	G 96 532
Front rail	Double arm	300/300 mm	800 mm	6.1 kg	30 kg	G 96 534
Front rail	Double arm	400/400 mm	1,000 mm	6.9 kg	25 kg	G 96 536
38 mm tube						
38 mm tube	Swivel arm	300 mm	500 mm	4.3 kg	40 kg	G 96 527
38 mm tube	Swivel arm	400 mm	600 mm	4.7 kg	40 kg	G 96 529
38 mm tube	Double arm	200/200 mm	600 mm	5.5 kg	40 kg	G 96 569
38 mm tube	Double arm	300/200 mm	700 mm	5.8 kg	35 kg	G 96 533
38 mm tube	Double arm	300/300 mm	800 mm	6.1 kg	30 kg	G 96 535
38 mm tube	Double arm	400/400 mm	1,000 mm	6.9 kg	25 kg	G 96 537
Vertical rail (GCX)						
Vertical rail (GCX)	Double arm	400/400 mm	1,000 mm	6.9 kg	25 kg	G 97 917

Individual workstation components

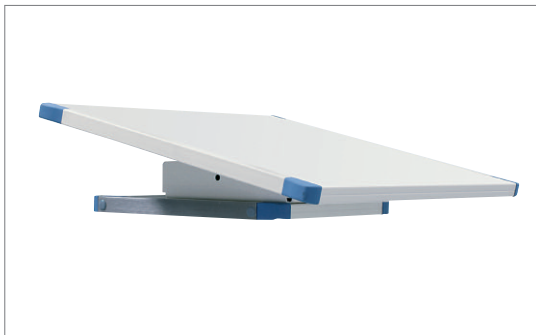


SPECIAL SHELVES



MT-1704-2005

Pull-out shelf



MT-1706-2005

Tilt shelf

SPECIAL SHELVES

PULL-OUT SHELF

For Agila/Movita/Forta column

Front rail attachment	G 91 950
Front rail attachment	G 91 951

	G 91 950	G 91 951
Shelf surface (W x D)	530 x 480 mm	630 x 480 mm
Weight	14 kg	15 kg
Max. load	40 kg	40 kg
Max. extension	320 mm	320 mm

Extension with an 8-notch graduation à 40 mm, adjustable to specific equipment depths.

TILT SHELF

Front rail attachment	G 92 456
Tube attachment (pole) Ø 38 mm	G 92 457

Suitable for positioning monitors without proprietary tilt adjustment, etc. Includes lateral standard rails for optional attachment of rail-mounted accessories.

Shelf surface (W x D)	530 x 480 mm
Weight	14 kg
Max. load	30 kg
Tilt angle, forward, lockable	20°

Attention: Equipment must be attached to the tilt shelf.

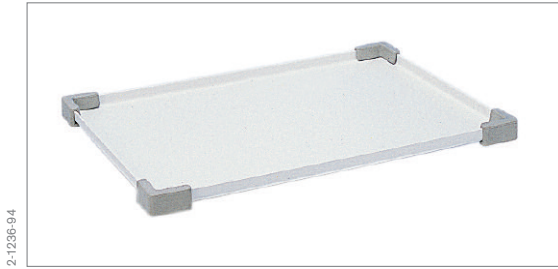
ACCESSORIES FOR SHELVES

Anti-slip mat 400 x 320 mm	G 93 547
Anti-slip mat 600 x 450 mm	G 93 548
Locking bolt	G 99 912

to prevent shelves from swiveling (38 mm tube connection).

The bolt is available for all relevant shelves at initial configuration.

SMALL SHELVES



2-1236-94

Shelf for attachment to double swivel rail.



MT-5997-2004

Shelf for attachment to extension arm



2-1203-94

Shelf for attachment to compact rail.



2-1202-94

Shelf for attachment to small equipment pole

SMALL SHELVES

SHELF

G 13 455

Attachment to double swivel rail.
Additional usable surface for small items.

Consisting of

1 stainless steel shelf
1 attachment set for integration of double swivel rail

Weight	0.4 kg
Max. load	5.0 kg
Shelf surface	215 x 295 mm

SHELF

G 15 390

Attachment to the mounting arm system with 25 mm tube adapter (infusion) as front adapter.
Additional usable surface for small items.

Consisting of

1 stainless steel shelf with central attachment Ø 25 mm

Weight	1.5 kg
Max. load	5 kg*
Shelf surface	400 x 400 mm

*depending on the tube or rail extension arm used

SHELF

G 13 760

Attachment to compact rail.
Additional usable surface for small items.

Consisting of

1 stainless steel shelf
2 standard rails
2 double clamps for standard rails

Weight	2.3 kg
Max. load	5.0 kg
Shelf surface	365 x 315 mm

SHELF

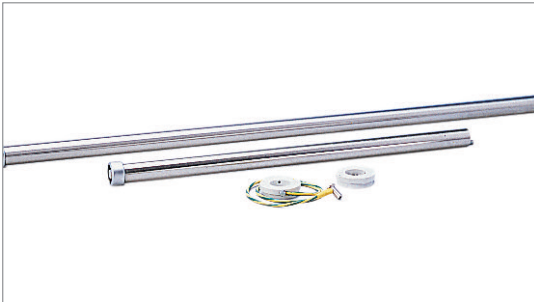
G 15 185

Attachment to small equipment pole Ø 25 mm.
Additional usable surface for small items.

Weight	2.0 kg
Max. load	5.0 kg
Shelf surface	335 x 200 mm
Swivel range	360°

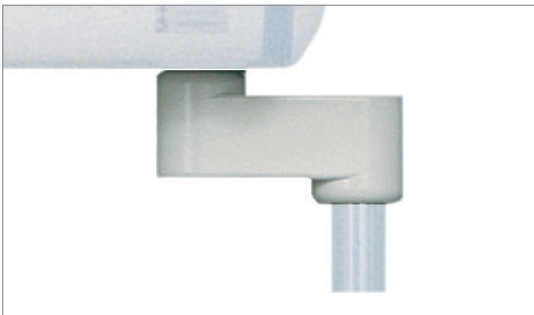
RACK & POLE

2-1211-9.4



Rack & Pole support tubes

MT-21-200.4



Tube attachment set 1.5 B

2-1183-9.4



Rack C short-short

RACK & POLE

RACK & POLE SUPPORT TUBES

Attachment to Agila head/Movita head/Ponta/Opera

Model length 700 mm	G 19 340
Model length 1,500 mm	G 23 201

Tube accommodation for integration of additional workstation components with Ø 38 mm interface for upgrading/re-equipping existing media heads or equipment carriers (racks).

	Length 700 mm	Length 1,500 mm
Weight	1.6 kg	3.0 kg
Max. load	75 kg	75 kg
Diameter	38 mm	38 mm

TUBE ATTACHMENT SET 1.5 B

G 17 805

Attachment to Agila head/Movita head

For accommodation of additional workstation components and equipment carriers (racks) with Ø 38 mm interface.

Weight	2.0 kg
Max. load (total)	120 kg

RACK C SHORT-SHORT

Attachment to Ponta and Opera.

For accommodation of additional workstation components and equipment carriers (racks) with Ø 38 mm interface.

Consisting of

1 cross bar with attachment material (narrow)	G 13 196
1 cross bar with attachment material (wide)	G 13 617
2 support tubes 700 mm, Ø 38 mm	G 19 340

narrow version	G 14 256
wide version	G 14 257

	G 14 256	G 14 257
Weight	6.5 kg	6.6 kg
Width	490 mm	690 mm

RACK & POLE



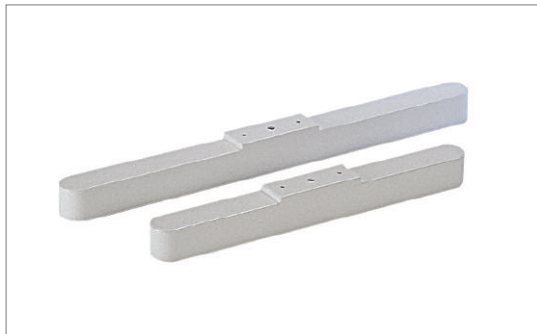
2-1180-94

Rack C short-long



2-1181-94

Rack C long-long



1-94-98

Rack C cross bar

RACK & POLE

RACK C SHORT-LONG

Narrow version	G 14 258
Wide version	G 14 259

Attachment to Ponta and Opera.

For accommodation of additional workstation components and equipment carriers (racks) with Ø 38 mm interface.

Consisting of

1 cross bar with attachment material (narrow)	G 13 196
1 cross bar with attachment material (wide)	G 13 617
1 support tube 700 mm, Ø 38 mm	G 19 340
1 support tube 1,500 mm, Ø 38 mm	G 23 201

	G 14 258	G 14 259
Weight	7.8 kg	7.9 kg
Width	550 mm	750 mm
Length	700/1,500 mm	700/1,500 mm
Depth	60 mm	60 mm
Max. load	150 kg	150 kg

RACK C LONG-LONG

Narrow version	G 14 260
Wide version	G 14 261

Attachment to Ponta Classic.

For accommodation of additional workstation components and equipment carriers (racks) with Ø 38 mm interface.

Consisting of

1 cross bar with attachment material (narrow)	G 13 196
1 cross bar with attachment material (wide)	G 13 617
2 support tubes 1,500 mm, Ø 38 mm	G 23 201

	G 14 260	G 14 261
Weight (kg)	9,1	9,2
Width (mm)	490	690

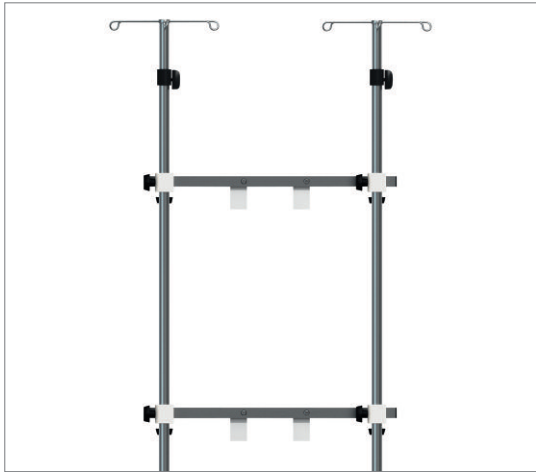
RACK C CROSS BAR

Narrow version	G 13 196
Wide version	G 13 617

Attachment to Ponta and Opera. Support element for modification of existing equipment carriers (e.g. changing wide).

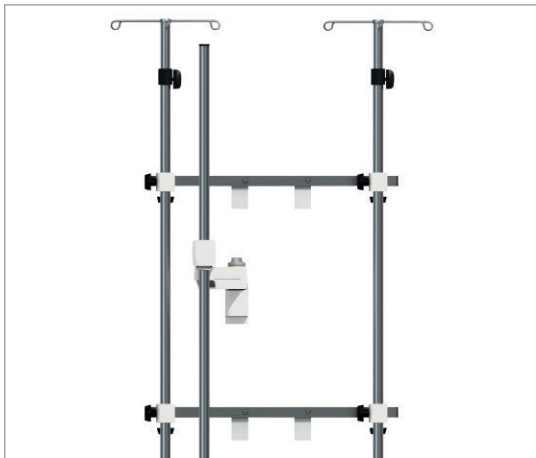
	G 13 196	G 13 617
Weight	2.7 kg	2.8 kg
Width	550 mm	750 mm
Height	65 mm	65 mm
Depth	60 mm	60 mm
Max. load	150 kg	150 kg

INFUSION MANAGEMENT



D-27712-2009

Component set "Infusion AS 1"



D-27711-2009

Component set "Infusion AS 2"



D-27710-2009

Equipment pole set Infusion Type 1

INFUSION MANAGEMENT

COMPONENT SET "INFUSION AS 1" G 15 798

Front rail attachment Agila/Movita/Forta column.
Suitable for attachment of up to 8 infusion pumps.

Consisting of

2 clamp rails 600 mm, 10 x 25 mm	G 13 870
2 CVP poles 1,000 mm, Ø 25 mm	G 15 020
4 rail holders, short	G 13 822
H x W x D	1,000 x 800 x 200 mm
Weight	6.6 kg
Max. load (total)	60 kg

COMPONENT SET "INFUSION AS 2" G 15 799

Front rail attachment Agila/Movita/Forta column.
Suitable for attachment of up to 12 infusion pumps.

Consisting of

2 clamp rails 600 mm, 10 x 25 mm	G 13 870
2 CVP poles 1,000 mm, Ø 25 mm	G 15 020
4 rail holders, short	G 13 822
1 small equipment pole 1,000 mm	G 15 677
1 mounting arm	G 96 526
H x W x D	1,000 x 800 x 500 mm
Weight	10.0 kg
Max. load (total)	60 kg

EQUIPMENT POLE SET INFUSION TYPE 1

Narrow version (pole distance approx. 170 mm) G 16 404

Wide version (pole distance approx. 440/580 mm) G 16 405

Tube attachment (pole) Ø 38 mm Agila/Movita head,
Agila column tube.

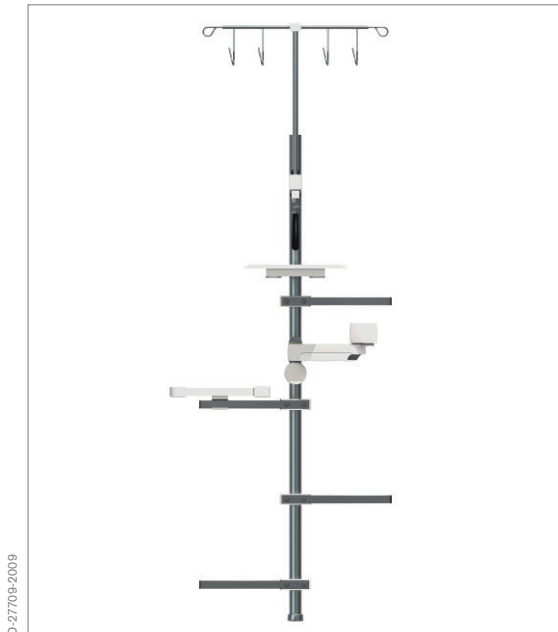
Suitable for attachment of up to 10 infusion pumps.

Consisting of

1 support tube 1,500 mm, Ø 38 mm	G 19 342
1 infusion bottle holder	G 19 170
2 compact rails for support tube Ø 38 mm	2M 85 337
4 rail holders, short (for narrow version)	G 13 822
4 rail holders, long (for wide version)	G 13 821
2 small equipment poles 1,000 mm	G 15 677
2 mounting arm systems	G 96 527

	Narrow version	Wide version
H x W	2,000 x 170 mm	2,000 x 440/580 mm
Weight	10.4 kg	12.8 kg
Max. load (total)	60 kg	60 kg

INFUSION MANAGEMENT



D-27705-2009

Equipment pole set Infusion Type 2



2-1064-96

CVP pole 1



MT-5994-2004

CVP pole 2

INFUSION MANAGEMENT

EQUIPMENT POLE SET INFUSION TYPE 2 **G 16 406**

Please note and order separately:

Adapter for Agila head **G 19 315**

Tube attachment (pole) Ø 38 mm Agila/Movita head, Agila column tube
Suitable for attachment of up to 10 infusion pumps, including surface area on two shelves.

Consisting of

1 support tube 1,500 mm, Ø 38 mm	G 19 342
1 infusion bottle holder	G 19 170
4 double swivel rails for support tube Ø 38 mm	G 13 450
1 shelf 215 x 295 mm for double swivel rail	G 13 455
1 compact rail for support tube Ø 38 mm	2M 85 337
1 shelf 365 x 315 mm for compact rail	G 13 760
1 mounting arm system	G 96 527

H x W x D **2,300 x 700 x 320 mm**

Weight **11.2 kg**

Max. load (total) **60 kg**

CVP POLE 1 **G 15 020**

Attachment to 2 standard rails via rail holders.

1 extension arm (tube Ø 38 mm), 1 extension arm (front rail)

Suitable for attachment of up to 4 infusion bottles.

Consisting of

1 receiving tube Ø 25 mm with height-adjustable extension pole and bottle hooks	
1 clamp ring	G 19 015
Weight	1.6 kg
Length of receiving tube	1,000 mm
Pull-out height	800 mm
Max. load (total)	25 kg

CVP POLE 2 **G 19 170**

Attachment to 2 standard rails via rail holders

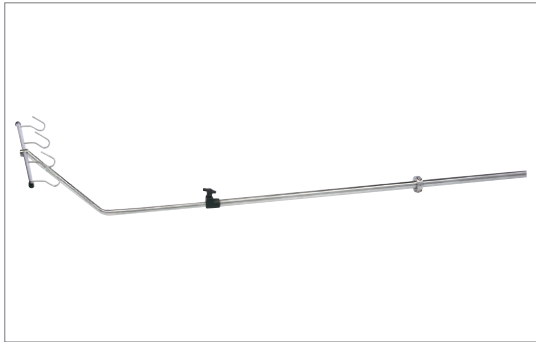
1 extension arm (tube Ø 38 mm), 1 extension arm (front rail), suitable for attachment of up to 4

infusion bottles.

Consisting of

1 receiving tube Ø 25 mm with height-adjustable extension pole and bottle hooks	
1 clamp ring	G 19 015
Weight	1.6 kg
Length of receiving tube	1,000 mm
Pull-out height	800 mm
Max. load (total)	15 kg

INFUSION MANAGEMENT



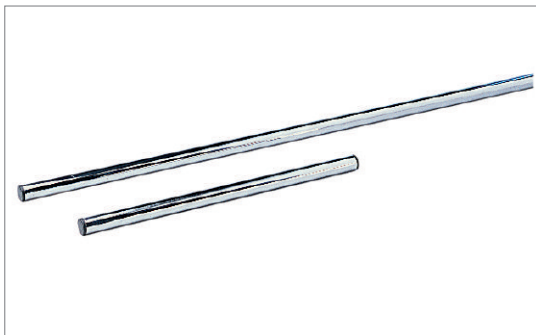
D-86-2010

CVP pole 2, angled



2-1213-94

Infusion bottle holder



2-1215-94

Small equipment pole

INFUSION MANAGEMENT

CVP POLE 2, ANGLED

G 97 070

Attachment to 2 standard rails via rail holders
Attachment to standard rail profile/small equipment pole or mounting arm system.
Suitable for attachment of up to 4 infusion bottles.

Consisting of

1 receiving tube Ø 25 mm with height-adjustable extension pole and bottle hooks	
1 clamp ring	G 19 015
Weight	1.6 kg
Length of receiving tube	1,000 mm
Pull-out height	800 mm
Max. load (total)	15 kg

INFUSION BOTTLE HOLDER

G 12 985

Attachment to standard rail.
Suitable for attachment of up to 6 infusion bottles.

Consisting of

1 extension pole, height-adjustable, with bottle hooks	
1 attachment clamp for standard rail	
Weight	2.0 kg
Width	600 mm
Adjustable height	380 mm
Max. load (total)	15 kg

SMALL EQUIPMENT POLE

Length 500 mm	G 15 676
Length 1,000 mm	G 15 677
Length 1,500 mm	G 15 678

Attachment to standard rail via rail holders or mounting arm system. Suitable for attaching various accessories and small equipment.

Consisting of

1 pole 500/1,000/1,500 mm, Ø 25 mm

	Version	Version	Version
	500 mm	1,000 mm	1,500 mm
Weight	0.4 kg	0.85 kg	1.25 kg
Diameter	25 mm	25 mm	25 mm
Max. load	15 kg	15 kg	15 kg

INFUSION MANAGEMENT



D-57-2010

Transport infusion pole system



D-56-2010

Transport infusion adapter



MT-1177-2006

Transport infusion holder



MT-5999-2004

Infusion bottle holder



MT-5998-2004

Clamp ring set (2 pieces)

INFUSION MANAGEMENT

TRANSPORT INFUSION POLE SYSTEM

Transport infusion adapter	G 93 861
Transport infusion holder	G 93 862
Attachment to mounting arm system.	

Removable infusion management system, specially suited for clinic-internal patient transport. This transport infusion system consists of a transport infusion adapter, which can be integrated with an infusion pole (e.g. G 15 020) for example, and with the transport infusion holder that is integrated with a supply unit or intensive care bed.

The entire system is designed for tubes with 25 mm diameter.

	Adapter G 93 861	Holder G 93 862
Weight	0.3 kg	1.5 kg
Max. load	15 kg	15 kg
Interface	25 mm tube	25 mm tube

INFUSION BOTTLE HOLDER

G 14 366

Attachment to CVP pole/small equipment pole
Suitable for attachment of an infusion bottle.

Weight	0.2 kg
Interface	25 mm tube

CLAMP RING SET (2 PIECES)

G 19 015

For securing CVP poles/small equipment poles from unintentional sliding (for example).

Weight	0.3 kg
Interface	25 mm tube

SWIVEL CABINETS



D-26678-2009



MT-272-88

Swivel cabinet 1



2-73-98

Swivel cabinet 2

SWIVEL CABINETS

SWIVEL CABINET 1 G 90 150

Tube attachment (pole) Ø 38 mm Agila/Movita head, GeminaDUO, Agila column tube
To accommodate small items and personal belongings of the patient.

Consisting of

1 tray

1 drawer

Weight	3.0 kg
Max. load	5.0 kg
Usable drawer height interior	120 mm

SWIVEL CABINET 2 G 90 158

Tube attachment (pole) Ø 38 mm Agila/Movita head, GeminaDUO, Agila column tube
To accommodate small items and personal belongings of the patient.

Consisting of

1 tray

2 drawers

Weight	4.0 kg
Max. load	10.0 kg
Usable drawer height interior	120 mm each

RAILS AND HOLDERS



2-1105-94

RAILS AND HOLDERS

STANDARD RAIL

Length 400 mm	G 13 851
Length 600 mm	G 13 829
Length 800 mm	G 14 449

Attachment to standard profile/small equipment pole via double clamp/rail holder. Offers universal attachment options for rail-mounted accessories and small equipment.

Consisting of

1 standard rail 400/600/800 mm, 10 x 25 mm with dummy plugs

Weight

at a length of 400 mm	0.3 kg
at a length of 600 mm	0.5 kg
at a length of 800 mm	0.6 kg

PARALLEL RAIL

Narrow version	G 13 430
Wide version	G 13 364

Attachment between two support tubes Ø 38 mm, Agila/Movita head. Offers universal attachment options for rail-mounted accessories and small equipment.

Consisting of

Double rail with holding clamps for assembly between two support tubes Ø 38 mm

	G 13 430	G 13 364
Weight	1.2 kg	1.6 kg
Rail length	2 x 420 mm	2 x 620 mm
Max. load	10.0 kg	10.0 kg

DOUBLE SWIVEL RAIL

G 13 450

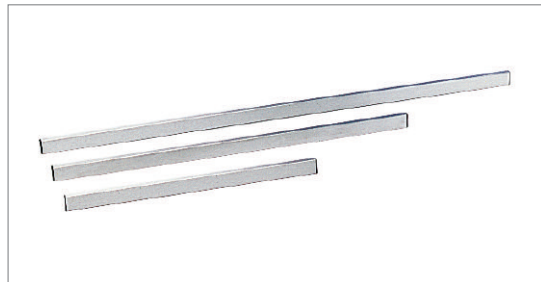
Tube attachment (pole) Ø 38 mm, Agila/Movita head, GeminaDUO, Agila column tube. Offers universal attachment options for rail-mounted accessories and small equipment.

Consisting of

2 standard rails 10 x 25 mm

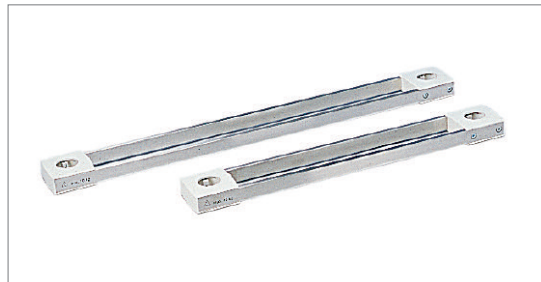
1 holding clamp for attachment to support tube Ø 38 mm

Weight	0.6 kg
Max. load	5.0 kg
Swivel range	360°
Total length	300 mm



2-1207-94

Standard rails



2-1206-94

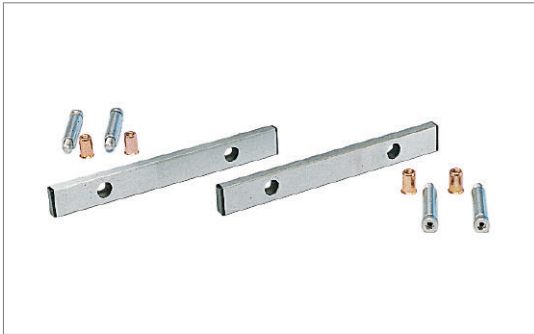
Parallel rails



2-1235-94

Double swivel rails

RAILS AND HOLDERS



2-1233-94

Standard rails



MT-1712-2005

Standard rail on Movita column

RAILS AND HOLDERS

STANDARD RAILS

Attachment to Agila head/Movita head and column as well as Forta column. Suitable for use as a grip element/as an additional attachment option for rail-mounted accessories and small equipment.

for Agila® column

G 93 595

1 standard rail 10 x 25 mm with dummy plugs and attachment material for attachment to rear of media column.

Length	180 mm
Weight	0.5 kg
Max. load	5.0 kg

for Agila® head

G 19 932

1 standard rail 10 x 25 mm with dummy plugs and attachment material for attachment to front of media column.

Length	220 mm
Weight	0.5 kg
Max. load	5.0 kg

for Movita® column

for lateral attachment

G 93 595

for rear attachment

G 93 597

1 standard rail 10 x 25 mm with dummy plugs and attachment material for attachment to media column.

Length	for lateral attachment (G 93 595)	180 mm
	for rear attachment (G 93 597)	280 mm
Weight		0.5 kg
Max. load		5.0 kg

for Movita® head

G 93 595

1 standard rail 10 x 25 mm with dummy plugs and attachment material for attachment to media column.

Length	180 mm
Weight	0.5 kg
Max. load	5.0 kg

for Forta® column

G 15 705

2 standard rails 10 x 25 mm with dummy plugs and attachment material for attachment to rear of media column.

Length	200 mm
Weight	0.5 kg
Max. load	5.0 kg

Assembly material retro-fitting set

G 15 670

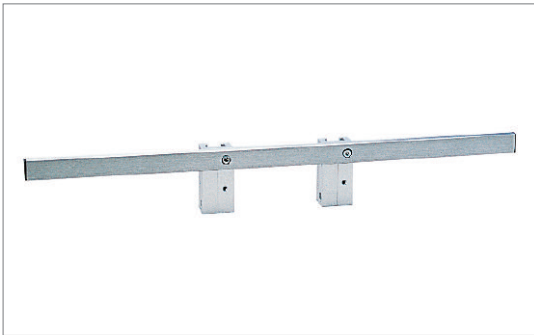
A special tool is required for this

RAILS AND HOLDERS



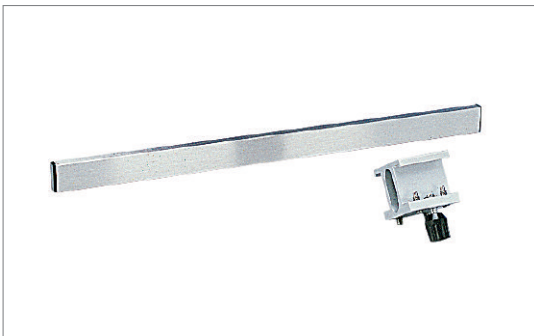
D-26987-2009

Support rail Ø 38 mm



2-1193-94

Clamp rail



2-1220-94

Support rail set with universal grip

RAILS AND HOLDERS

SUPPORT RAILS Ø 38 MM **2M 86 185**

GeminaDUO, Agila column tube, offers universal attachment options for rail-mounted accessories and small equipment.

Consisting of

Standard rail with holder for attachment to GeminaDUO support tube Ø 38 mm

Weight	0.5 kg
Length	400 mm

UNIVERSAL GRIPS **G 92 439**

Rail profile with slight curvature offers universal attachment options for rail accessories while simultaneously serving as a handle.

Weight	0.5 kg
Length	320 mm
Max. load	10 kg

CLAMP RAIL **G 13 870**

Front rail attachment Agila/Movita/Fora column offers universal attachment options for rail-mounted accessories and small equipment.

Consisting of

- 1 standard rail 10 x 25 mm with dummy plugs
- 2 holders for assembly on front rail system

Weight	0.9 kg
Length	600 mm
Max. load	30.0 kg

SUPPORT RAIL SET **G 13 768**

Attachment to standard rail profile offers universal attachment options for rail-mounted accessories and small equipment.

Consisting of

- 1 standard rail 10 x 25 mm with dummy plugs
- 1 double clamp for attachment to standard rail profile

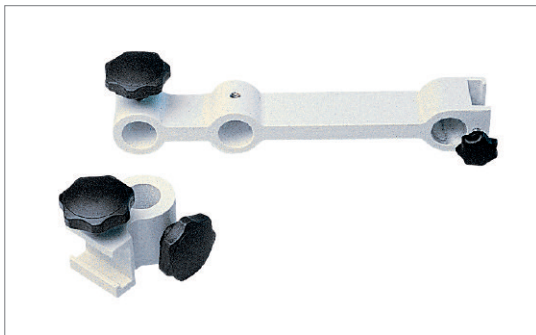
Weight	0.9 kg
Length	300 mm
Max. load	5.0 kg

RAILS AND HOLDERS



2-1298-94

Compact rail



2-1065-96

Rail holder, short



2-121-94

Double clamp

RAILS AND HOLDERS

COMPACT RAIL

2M 85 337

Tube attachment (pole) Ø 38 mm Agila/Movita head, GeminaDUO, Agila column tube
The surrounding rail profile offers universal attachment options for rail-mounted accessories and small equipment.

Consisting of

2 half components with surrounding standard rails 10 x 25 mm and connecting screws.

Length	4 x 100 mm
Weight	0.9 kg
Max. load	30 kg

COMPACT RAIL, NARROW

G 98 530

Tube attachment (pole) Ø 38 mm Agila/Movita head, Gemina, Agila column tube.
The surrounding rail profile offers universal attachment options for rail-mounted accessories and small equipment.

Consisting of

2 half components with surrounding standard rails 10 x 25 mm and connecting screws

Length	4 x 73 mm
Weight	0.8 kg
Max. load	30 kg

RAIL HOLDERS, SHORT

G 13 822

Attachment to standard rail profile/compact rail.

Suitable for attachment to CVP pole Ø 25 mm/small equipment pole Ø 25 mm.

Weight	0.4 kg
Rail to pole dimension	37 mm
Max. load	10 kg

RAIL HOLDER, LONG

G 13 821

Attachment to small equipment pole/standard rail profile/compact rail.

Suitable for attachment to CVP pole Ø 25 mm/small equipment pole Ø 25 mm.

Weight	1.0 kg
Rail to pole dimension	170/240 mm
Max. load	10 kg

DOUBLE CLAMP

G 13 147

Attachment to standard rail profile.

Suitable for connecting 2 standard rails 10 x 25 mm.

Weight	0.2 kg
Max. load	5 kg

CABLE MANAGEMENT



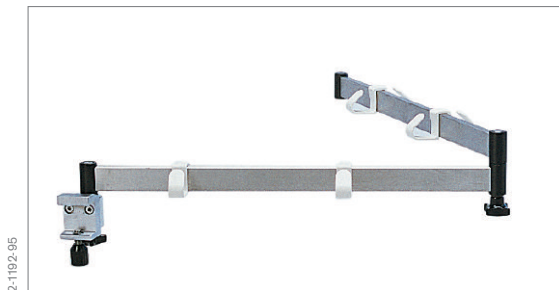
D-26905-2009

Cable management system (boxes):
Cable duct and cable boxes



D-27727-2009

Cable box



2-1192-95

Cable extension arm



2-1201-94

Cable holder

CABLE MANAGEMENT

CABLE MANAGEMENT SYSTEM FOR MOVITA® COLUMN

The Movita column cable management system can be integrated retroactively and as part of the initial configuration. The cable management system can be retro-fitted on one or both sides of the front of the Movita column. The front plate of the cable management side cannot accommodate other attachments.

Cable duct lengths

500 mm
700 mm
1,000 mm
1,250 mm
1,500 mm

CABLE MANAGEMENT SYSTEM (BOXES)

The cable management system (boxes) can be ordered separately and equipped retroactively for already installed shelves. Depending on the existing shelf type, the following versions can be ordered:

Cable management system height 100 mm, depth 140 mm (exterior)

width 109 mm each (2x)	G 93 341
width 215 mm each (2x)	G 93 340
width 315 mm each (2x)	G 93 534

The height of the cable management system corresponds with that of a documentation module.

Cable management system height 170 mm, depth 140 mm (exterior)

width 109 mm each (2x)	G 93 535
width 215 mm each (2x)	G 93 536
width 315 mm each (2x)	G 93 537

The height of the cable management system corresponds with that of a drawer.

CABLE EXTENSION ARMS

G 13 040

Attachment to standard rail profile 10 x 25 mm.

Universal guide for cables and hoses.

Consisting of

- 1 2-part standard rail 10 x 25 mm
- 1 holding clamp for attachment to standard rail
- 4 cable/hose guides

Weight	1.0 kg
Max. load	3.0 kg
Extension arm length	800 mm

CABLE HOLDER FOR RAILS (SET OF 10)

G 15 225

Attachment to standard rail profile 10 x 25 mm.

Suitable for guiding cables and hoses along standard rails 10 x 25 mm.

CABLE HOLDER FOR TUBE (SET OF 4)

G 13 171

Tube attachment (pole) Ø 38 mm Agila/Movita head, GeminaDUO.

Suitable for guiding cables and hoses along support tubes Ø 38 mm.

Consisting of

- 2 half components with connection screws and 4 guiding ducts

OPERATING ELEMENTS



MT-1714-2005

Operation on media column



MT-1714-2005

Operating element for infusion-side



2-1200-94

Cable remote control

OPERATING ELEMENTS

OPERATING ELEMENT ON COLUMN/HEAD

Attachment to front plate

Consisting of

Set with 2 grip elements for operating ceiling supply units

as handles, without additional functionality	G 93 671
with controls for a pneumatic brake	G 93 672
with controls for a pneumatic brake and height- adjustment	G 93 673
with controls for two pneumatic brakes	G 93 674
with controls for two pneumatic brakes and height-adjustment	G 93 675
with controls for height-adjustment	G 93 676

OPERATING ELEMENT ON INFUSION-SIDE

(with extension element)

G 93 640

Attachment to front rail system of Agila/Movita column with controls for two pneumatic brakes

CABLE REMOTE CONTROL

G 93 850

Consisting of

1 operating unit with control buttons and integrated holder for attachment to a standard rail, 1 spiral cable with connection plug

Weight	0.3 kg
Action radius	1,000 mm

ACCESSORIES

Cable remote control for CSU up to 10/2005, 6-pin	G 13 844
Socket for remote control (6-pin)	G 13 935
Socket for remote control (12-pin)	G 93 810

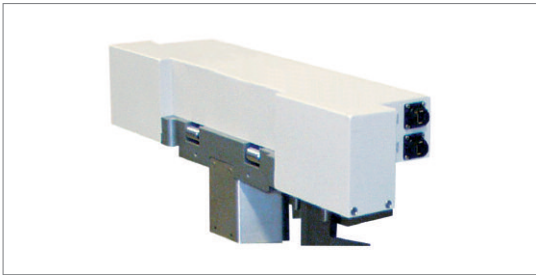
MEDIADOCKING

MT-3460-2003



MediaDocking on CSU-side

MT-5693-2004



MediaDocking interface

MEDIADOCKING

MEDIADOCKING ON CSU-SIDE

G 91 360

Front rail attachment

Movita column 1,000/1,250/1,500 / Forta column

Suitable for lifting the Primus anesthesia device (ceiling version)/ equipment trolley Mova® Cart lift MediaDocking in combination with Movita lift (column 1,000/1,250/1,500 mm)/Forta lift.

With magnetic docking control.

Automatic connection of all required media during the docking process.

Weight	7.5 kg
Max. load	250.0 kg

MEDIADOCKING INTERFACE

G 91 365

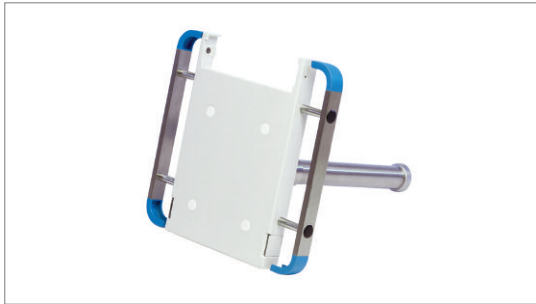
Attachment to Primus anesthesia device

Suitable for integration with the anesthesia device

Primus (ceiling version, new device) with MediaDocking.

Weight	6.0 kg
Max. load	250.0 kg

EQUIPMENT CARRIERS



MT-6002-2004

Babylog holder



1-3998-9T

Equipment holder

VENTILATION EQUIPMENT HOLDER

BABYLOG HOLDER G 18 650

Attachment to tube extension arm/front rail extension arm.
For attachment of neonatal ventilation equipment Babylog 8000 incl. humidifier, incl. compact rail (2M 85 337).

Max. load	20.0 kg
Weight	3.7 kg

ANESTHESIA EQUIPMENT HOLDER

Front rail attachment Movita column 1.000/Forta column.
Suitable for attachment of anesthesia equipment/equipment trolleys to ceiling supply units.

Version C

For anesthesia devices Cato/Cicero in combination with Forta lift.

with magnetic and 230 V	G 14 230
opto-electronic docking control 115 V	G 92 720
Weight	3.8 kg
Max. load	250.0 kg

Version M (with magnetic docking control)

For anesthesia devices Fabius GS/FabiusCE/ Primus/Zeus and equipment cart MovaCart.

In combination with

Forta lift 230 V	G 16 210
Forta lift 115 V	G 16 206
Movita lift (column 1,000 mm) 230/115 V	G 14 309
Weight	3.8 kg
Max. load	250.0 kg

Universal version G 13 550

For Dräger anesthesia devices and third-party products in combination with Movita (without height-adjustment).

Weight	3.6 kg
Max. load	250.0 kg

HOLDER FOR 2 VAPORIZERS M 26 374

CEILING- AND WALL MOUNTING SET



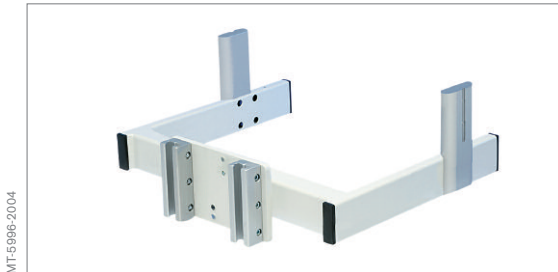
MT-383-2002

Primus wall mount set



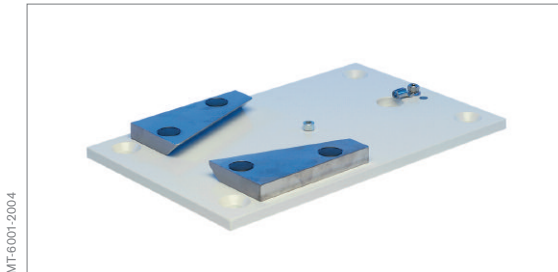
MT-5995-2004

Fabius CE wall mount set



MT-5995-2004

Ceiling mount bracket Fabius CE



MT-6001-2004

Fabius Tiro wall mount set

CEILING- AND WALL MOUNTING SETS

PRIMUS WALL MOUNTING SET

G 18 490

Attachment to Primus anesthesia device

Suitable for mounting the anesthesia device Primus (ceiling version) to the wall.

With swivel capability of 90° to the left or right.

FABIUS CE WALL MOUNTING SET

G 15 681

Attachment to Fabius CE anesthesia device Suitable for mounting the

anesthesia device Fabius CE (wall version) to the wall.

Please order the wall-side mounting set separately

1 wall fixture plate with dovetail holder

G 15 836

CEILING SET BRACKET FABIUS CE

G 15 682

Attachment to Fabius CE anesthesia device Suitable for attachment and lifting

of Fabius CE anesthesia device (ceiling version) in combination with

Forta lift/Movita lift (column 1,000) ceiling supply unit.

Weight

8.0 kg

FABIUS TIRO WALL MOUNTING SET

G 15 836

Attachment to Fabius Tiro anesthesia device Suitable for mounting the

anesthesia device Fabius Tiro (wall version) to the wall.

FABIUS GS CEILING SET

G 19 072

Attachment to Fabius GS anesthesia device Suitable for attachment and lifting

of Fabius GS anesthesia device in combination with Forta lift/Movita lift ceiling supply units.

Can be ordered in connection with a new Fabius GS device or individually to upgrade an existing device.

ZEUS CEILING SET

G 91 300

Attachment to Zeus anesthesia device Suitable for attachment and lifting of

Zeus anesthesia device in combination with Forta lift ceiling supply unit.

Can be ordered in connection with a new Zeus device or individually to upgrade an existing device.

ADDITIONAL ACCESSORIES



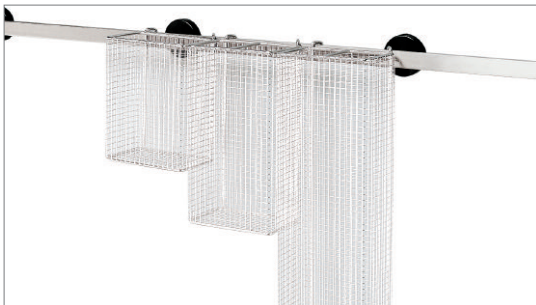
MT-265-98

NCL examination light



MT-266-98

Reading light



2-558-95

Wire basket

ADDITIONAL ACCESSORIES

NCL EXAMINATION LIGHT 2M 85 657

NCL examination light (with UK plug)	MP 00 435
--------------------------------------	-----------

Attachment to standard rail profile 10 x 25 mm

Consisting of

Halogen light with hinged arm
Holding clamp with transformer

Connection voltage	230 V / 240 V, 50 to 60 Hz
Bulbs	Philips Brilliant Line Pro 12 V/35 W/24° Type 14615
Max. illumination intensity E_C	17,000 lux at 0.5 m distance
Light field diameter D_{10}	20 cm at 0.5 m distance
Connection cable length	3 m
Hinged arm length	990 mm

READING LIGHT 2M 86 199

Attachment to standard rail profile 10 x 25 mm

Consisting of

Neon light with hinged arm
Holding clamp with transformer

Connection voltage	230 V / 240 V, 50 - 60 Hz
--------------------	------------------------------

WIRE BASKET

For attachment to standard rail profile 10 x 25 mm,
opening: 150 x 100 mm (W x D)

Depth	Weight	
200 mm	0.35 kg	M 26 146
280 mm	0.45 kg	M 26 145
480 mm	0.65 kg	M 25 121

ADDITIONAL ACCESSORIES



2-559-95

Litter bag holder



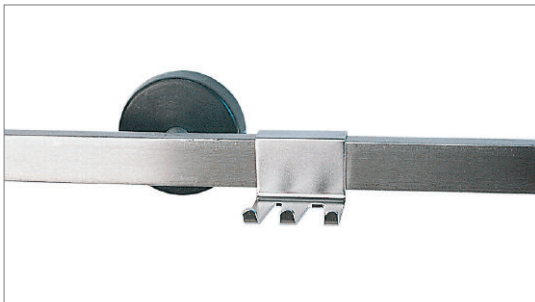
MT-6000-2004

Laquer pen RAL 9002



D-27708-2009

Connecting-hose holder



D-27707-2009

Aspiration hose holder

ADDITIONAL ACCESSORIES

LITTER BAG HOLDER M 24 695

For attachment to standard rail profile 10 x 25 mm

Consisting of

- 1 litter bag holder with hooks
- 1 set of litter bags (100 bags)

Weight 0.75 kg

Dimensions (W x D) 200 x 300 mm

LAQUER PEN RAL 9002

For small touch-ups, contents: 12 ml

for liquid-coated surfaces G 12 114

for powder-coated surfaces G 15 385

CONNECTING HOSE HOLDER 2M 85 446

Attachment to standard rail profile 10 x 25 mm/compact rail

For attachment of central supply connecting- hose

ASPIRATION HOSE HOLDER 2M 85 239

Attachment to standard rail profile 10 x 25 mm/compact rail

For attachment of aspiration hose (various diameters)



HEADQUARTERS

Drägerwerk AG & Co. KGaA
Moislinger Allee 53–55
23558 Lübeck, Germany

www.draeger.com

REGION EUROPE CENTRAL AND EUROPE NORTH

Dräger Medical GmbH
Moislinger Allee 53–55
23558 Lübeck, Germany
Tel +49 451 882 0
Fax +49 451 882 2080
info@draeger.com

REGION EUROPE SOUTH

Dräger Médical S.A.S.
Parc de Haute Technologie d'Antony 2
25, rue Georges Besse
92182 Antony Cedex, France
Tel +33 1 46 11 56 00
Fax +33 1 40 96 97 20
d1mfr-contact@draeger.com

REGION MIDDLE EAST, AFRICA, CENTRAL AND SOUTH AMERICA

Dräger Medical GmbH
Branch Office Dubai
Dubai Healthcare City
P.O. Box 505108
Dubai, United Arab Emirates
Tel + 971 436 24 762
Fax + 971 436 24 761
contactuae@draeger.com

REGION ASIA / PACIFIC

Draeger Medical South East Asia Pte Ltd
25 International Business Park
#04-27/29 German Centre
Singapore 609916, Singapore
Tel +65 6572 4388
Fax +65 6572 4399
asia.pacific@draeger.com

Manufacturer:

Dräger Medical GmbH
23542 Lübeck, Germany
The quality management system at
Dräger Medical GmbH is certified
according to ISO 13485, ISO 9001
and Annex II.3 of Directive
93/42/EEC (Medical devices).